



Datasheet for ABIN392162
anti-RND3 antibody (AA 133-165)



[Go to Product page](#)

3 Images

Overview

Quantity:	400 µL
Target:	RND3
Binding Specificity:	AA 133-165
Reactivity:	Human, Mouse, Rat
Host:	Rabbit
Clonality:	Polyclonal
Conjugate:	This RND3 antibody is un-conjugated
Application:	Western Blotting (WB), Immunohistochemistry (Paraffin-embedded Sections) (IHC (p))

Product Details

Immunogen:	This ARHE antibody is generated from rabbits immunized with a KLH conjugated synthetic peptide between 133-165 amino acids from the Central region of human ARHE.
Clone:	RB14500
Isotype:	Ig Fraction
Predicted Reactivity:	Pig
Purification:	This antibody is prepared by Saturated Ammonium Sulfate (SAS) precipitation followed by dialysis against PBS.

Target Details

Target:	RND3
---------	------

Target Details

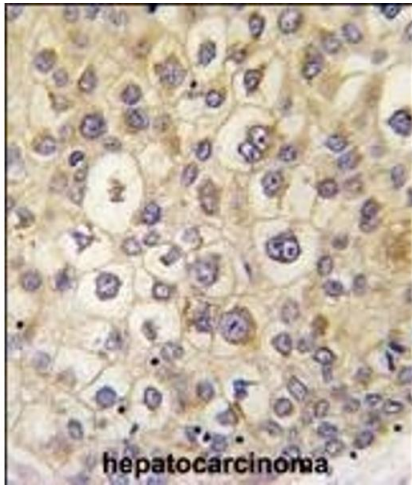
Alternative Name:	ARHE (RND3 Products)
Background:	Members of the Rho family of Ras-related GTPases, such as ARHE, regulate the organization of the actin cytoskeleton in response to extracellular growth factors. Like Ras (MIM 190020), Rho family members appear to cycle between an inactive GDP-bound form and an active GTP-bound form. Three major regulators of Rho activity have been identified: RhoGDIs, which interact with the GDP-bound Rho proteins to keep them in a resting complex (see MIM 601925), GEFs, which promote GDP/GTP exchange leading to activation of Rho proteins (see MIM 601855), and GAPs, which stimulate GTP hydrolysis and return the activated Rho protein to its inactive form (see MIM 602680) (Nobes et al., 1998 [PubMed 9531558]).
Molecular Weight:	27368
Gene ID:	390
NCBI Accession:	NP_001241667 , NP_005159
UniProt:	P61587

Application Details

Application Notes:	WB: 1:2000. WB: 1:1000. IHC-P: 1:10~50
Restrictions:	For Research Use only

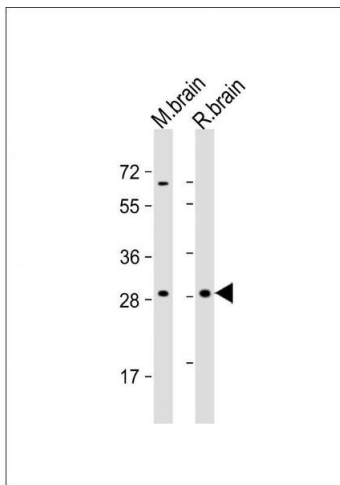
Handling

Format:	Liquid
Buffer:	Purified polyclonal antibody supplied in PBS with 0.09 % (W/V) sodium azide.
Preservative:	Sodium azide
Precaution of Use:	This product contains Sodium azide: a POISONOUS AND HAZARDOUS SUBSTANCE which should be handled by trained staff only.
Storage:	4 °C, -20 °C
Storage Comment:	Maintain refrigerated at 2-8 °C for up to 6 months. For long term storage store at -20 °C in small aliquots to prevent freeze-thaw cycles.
Expiry Date:	6 months



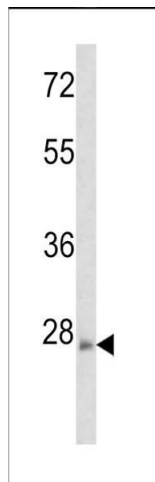
Immunohistochemistry (Paraffin-embedded Sections)

Image 1. Formalin-fixed and paraffin-embedded human hepatocarcinoma tissue reacted with ARHE antibody (Center) (ABIN392162 and ABIN2841881), which was peroxidase-conjugated to the secondary antibody, followed by DAB staining. This data demonstrates the use of this antibody for immunohistochemistry, clinical relevance has not been evaluated.



Western Blotting

Image 2. All lanes : Anti-ARHE Antibody (Center) at 1:2000 dilution Lane 1: mouse brain lysate Lane 2: rat brain lysate Lysates/proteins at 20 µg per lane. Secondary Goat Anti-Rabbit IgG, (H+L), Peroxidase conjugated at 1/10000 dilution. Predicted band size : 27 kDa Blocking/Dilution buffer: 5 % NFDm/TBST.



Western Blotting

Image 3. Western blot analysis of ARHE Antibody (Center)(Cat. 3(ABIN392162 and ABIN2841881)) in mouse brain tissue lysates (35 µg/lane). ARHE (arrow) was detected using the purified Pab.