



[Go to Product page](#)

Datasheet for ABIN392176
anti-HIF1A antibody (C-Term)

4 Images

Overview

| | |
|----------------------|---|
| Quantity: | 400 µL |
| Target: | HIF1A |
| Binding Specificity: | AA 728-757, C-Term |
| Reactivity: | Human, Mouse |
| Host: | Rabbit |
| Clonality: | Polyclonal |
| Application: | Western Blotting (WB), Immunofluorescence (IF), Immunohistochemistry (Paraffin-embedded Sections) (IHC (p)) |

Product Details

| | |
|---------------|--|
| Immunogen: | This HIF1Alpha antibody is generated from rabbits immunized with a KLH conjugated synthetic peptide between 728-757 amino acids from the C-terminal region of human HIF1Alpha. |
| Clone: | RB14563 |
| Isotype: | Ig Fraction |
| Purification: | This antibody is prepared by Saturated Ammonium Sulfate (SAS) precipitation followed by dialysis against PBS. |

Target Details

| | |
|-------------------|---|
| Target: | HIF1A |
| Alternative Name: | HIF1Alpha (HIF1A Products) |
| Background: | Hypoxia-inducible factor-1 (HIF1) is a transcription factor found in mammalian cells cultured |

Target Details

under reduced oxygen tension that plays an essential role in cellular and systemic homeostatic responses to hypoxia. HIF1 is a heterodimer composed of an alpha subunit and a beta subunit. The beta subunit has been identified as the aryl hydrocarbon receptor nuclear translocator (ARNT).

Molecular Weight: 92670

Gene ID: 3091

NCBI Accession: [NP_001230013](#), [NP_001521](#), [NP_851397](#)

UniProt: [Q16665](#)

Pathways: [Positive Regulation of Peptide Hormone Secretion](#), [Regulation of Hormone Metabolic Process](#), [Regulation of Hormone Biosynthetic Process](#), [Cellular Response to Molecule of Bacterial Origin](#), [Carbohydrate Homeostasis](#), [Transition Metal Ion Homeostasis](#), [Tube Formation](#), [Regulation of Carbohydrate Metabolic Process](#), [Signaling Events mediated by VEGFR1 and VEGFR2](#), [VEGFR1 Specific Signals](#), [Warburg Effect](#)

Application Details

Application Notes: IF: 1:10~50. WB: 1:1000. WB: 1:1000. IHC-P: 1:10~50

Restrictions: For Research Use only

Handling

Format: Liquid

Buffer: Purified polyclonal antibody supplied in PBS with 0.09 % (W/V) sodium azide.

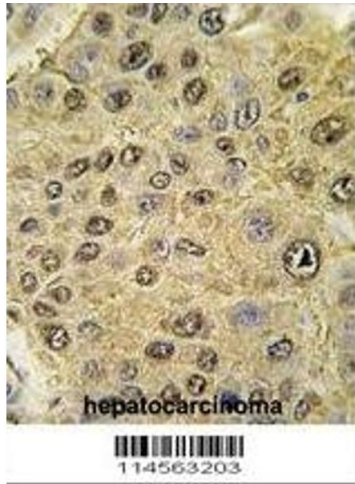
Preservative: Sodium azide

Precaution of Use: This product contains Sodium azide: a POISONOUS AND HAZARDOUS SUBSTANCE which should be handled by trained staff only.

Storage: 4 °C, -20 °C

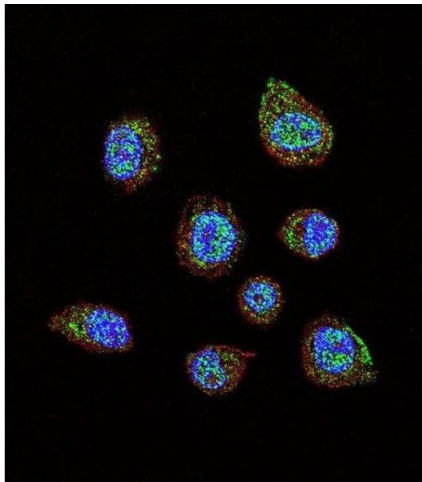
Storage Comment: Maintain refrigerated at 2-8 °C for up to 6 months. For long term storage store at -20 °C in small aliquots to prevent freeze-thaw cycles.

Expiry Date: 6 months



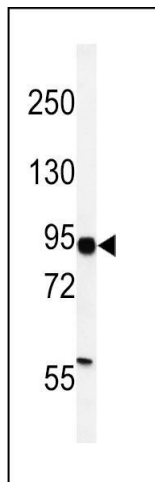
Immunohistochemistry (Paraffin-embedded Sections)

Image 1. Formalin-fixed and paraffin-embedded human hepatocarcinoma tissue reacted with HIF1Alpha antibody (C-term), which was peroxidase-conjugated to the secondary antibody, followed by DAB staining. This data demonstrates the use of this antibody for immunohis



Immunofluorescence

Image 2. Confocal immunofluorescent analysis of HIF1Alpha Antibody (C-term) (ABIN392176 and ABIN2841888) with MDA-M cell followed by Alexa Fluor 488-conjugated goat anti-rabbit IgG (green). Actin filaments have been labeled with Alexa Fluor 555 phalloidin (red). DI was used to stain the cell nuclear (blue).



Western Blotting

Image 3. Western blot analysis of HIF1Alpha Antibody (C-term) (ABIN392176 and ABIN2841888) in MDA-M cell line lysates (35 µg/lane). HIF1Alpha (arrow) was detected using the purified Pab.

Please check the [product details page](#) for more images. Overall 4 images are available for ABIN392176.