

Datasheet for ABIN392177  
**anti-SEMA3A antibody (AA 535-566)**[Go to Product page](#)

## 2 Images

## Overview

Quantity:	400 µL
Target:	SEMA3A
Binding Specificity:	AA 535-566
Reactivity:	Human
Host:	Rabbit
Clonality:	Polyclonal
Conjugate:	This SEMA3A antibody is un-conjugated
Application:	Western Blotting (WB), Immunohistochemistry (Paraffin-embedded Sections) (IHC (p))

## Product Details

Immunogen:	This SEMA3A antibody is generated from rabbits immunized with a KLH conjugated synthetic peptide between 535-566 amino acids from the Central region of human SEMA3A.
Clone:	RB14591
Isotype:	Ig Fraction
Predicted Reactivity:	C, M, Rat
Purification:	This antibody is prepared by Saturated Ammonium Sulfate (SAS) precipitation followed by dialysis against PBS.

## Target Details

Target:	SEMA3A
---------	--------

## Target Details

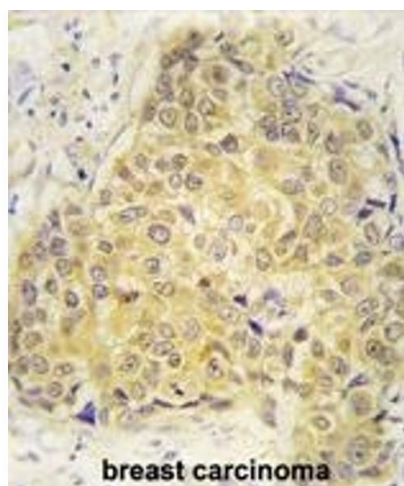
Alternative Name:	SEMA3A ( <a href="#">SEMA3A Products</a> )
Background:	SEMA3A is a member of the semaphorin family with an Ig-like C2-type (immunoglobulin-like) domain, a PSI domain and a Sema domain. This secreted protein can function as either a chemorepulsive agent, inhibiting axonal outgrowth, or as a chemoattractive agent, stimulating the growth of apical dendrites. In both cases, the protein is vital for normal neuronal pattern development. Increased expression of this protein is associated with schizophrenia and is seen in a variety of human tumor cell lines. Also, aberrant release of this protein is associated with the progression of Alzheimer's disease.
Molecular Weight:	88889
Gene ID:	10371
NCBI Accession:	<a href="#">NP_006071</a>
UniProt:	<a href="#">Q14563</a>
Pathways:	<a href="#">Regulation of Cell Size</a>

## Application Details

Application Notes:	WB: 1:1000. IHC-P: 1:10~50
Restrictions:	For Research Use only

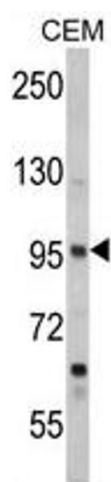
## Handling

Format:	Liquid
Buffer:	Purified polyclonal antibody supplied in PBS with 0.09 % (W/V) sodium azide.
Preservative:	Sodium azide
Precaution of Use:	This product contains Sodium azide: a POISONOUS AND HAZARDOUS SUBSTANCE which should be handled by trained staff only.
Storage:	4 °C, -20 °C
Storage Comment:	Maintain refrigerated at 2-8 °C for up to 6 months. For long term storage store at -20 °C in small aliquots to prevent freeze-thaw cycles.
Expiry Date:	6 months



#### Immunohistochemistry (Paraffin-embedded Sections)

**Image 1.** Formalin-fixed and paraffin-embedded human breast carcinoma tissue reacted with SEA antibody (Center) (ABIN392177 and ABIN2841890) , which was peroxidase-conjugated to the secondary antibody, followed by DAB staining. This data demonstrates the use of this antibody for immunohistochemistry, clinical relevance has not been evaluated.



#### Western Blotting

**Image 2.** Western blot analysis of SEA Antibody (Center) (ABIN392177 and ABIN2841890) in CEM cell line lysates (35 µg/lane). SEA (arrow) was detected using the purified Pab.