

Datasheet for ABIN392192
anti-ANGPTL6 antibody (AA 206-236)[Go to Product page](#)

1 Image

Overview

Quantity:	400 µL
Target:	ANGPTL6
Binding Specificity:	AA 206-236
Reactivity:	Human
Host:	Rabbit
Clonality:	Polyclonal
Conjugate:	This ANGPTL6 antibody is un-conjugated
Application:	Western Blotting (WB)

Product Details

Immunogen:	This ANGPTL6 antibody is generated from rabbits immunized with a KLH conjugated synthetic peptide between 206-236 amino acids from the Central region of human ANGPTL6.
Clone:	RB14393
Isotype:	Ig Fraction
Purification:	This antibody is prepared by Saturated Ammonium Sulfate (SAS) precipitation followed by dialysis against PBS.

Target Details

Target:	ANGPTL6
Alternative Name:	ANGPTL6 (ANGPTL6 Products)

Target Details

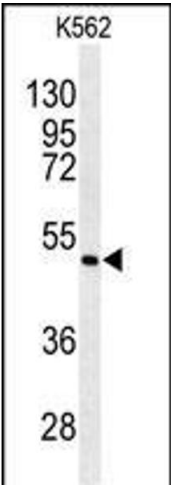
Background:	ANGPTL6 may play a role in the wound healing process. It may promote epidermal proliferation, remodeling and regeneration and may promote the chemotactic activity of endothelial cells and induce neovascularization. ANGPTL6 may counteract high-fat diet-induced obesity and related insulin resistance through increased energy expenditure.
Gene ID:	83854
NCBI Accession:	NP_114123
UniProt:	Q8NI99
Pathways:	Regulation of Actin Filament Polymerization

Application Details

Application Notes:	WB: 1:1000
Restrictions:	For Research Use only

Handling

Format:	Liquid
Buffer:	Purified polyclonal antibody supplied in PBS with 0.09 % (W/V) sodium azide.
Preservative:	Sodium azide
Precaution of Use:	This product contains Sodium azide: a POISONOUS AND HAZARDOUS SUBSTANCE which should be handled by trained staff only.
Storage:	4 °C,-20 °C
Storage Comment:	Maintain refrigerated at 2-8 °C for up to 6 months. For long term storage store at -20 °C in small aliquots to prevent freeze-thaw cycles.
Expiry Date:	6 months



Western Blotting

Image 1. Western blot analysis of ANGPTL6 antibody (Center) (ABIN392192 and ABIN2841897) in K562 cell line lysates (35 µg/lane). ANGPTL6 (arrow) was detected using the purified Pab.