

Datasheet for ABIN392195
anti-PPP2R3B antibody (N-Term)[Go to Product page](#)

1 Image

Overview

Quantity:	400 µL
Target:	PPP2R3B
Binding Specificity:	AA 25-54, N-Term
Reactivity:	Human
Host:	Rabbit
Clonality:	Polyclonal
Conjugate:	This PPP2R3B antibody is un-conjugated
Application:	Western Blotting (WB)

Product Details

Immunogen:	This PR48 antibody is generated from rabbits immunized with a KLH conjugated synthetic peptide between 25-54 amino acids from the N-terminal region of human PR48.
Clone:	RB14472
Isotype:	Ig Fraction
Purification:	This antibody is prepared by Saturated Ammonium Sulfate (SAS) precipitation followed by dialysis against PBS.

Target Details

Target:	PPP2R3B
Alternative Name:	PR48 (PPP2R3B Products)

Target Details

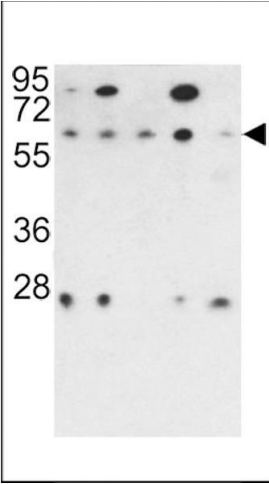
Background:	Protein phosphatase 2 (formerly named type 2A) is one of the four major Ser/Thr phosphatases and is implicated in the negative control of cell growth and division. Protein phosphatase 2 holoenzymes are heterotrimeric proteins composed of a structural subunit A, a catalytic subunit C, and a regulatory subunit B. These different regulatory subunits confer distinct enzymatic specificities and intracellular localizations to the holoenzyme. This protein belongs to the B" family. The B" family has been further divided into subfamilies. This protein belongs to the beta subfamily of regulatory subunit B".
Molecular Weight:	65061
Gene ID:	28227
NCBI Accession:	NP_037371
UniProt:	Q9Y5P8
Pathways:	PI3K-Akt Signaling, Mitotic G1-G1/S Phases

Application Details

Application Notes:	WB: 1:1000
Restrictions:	For Research Use only

Handling

Format:	Liquid
Buffer:	Purified polyclonal antibody supplied in PBS with 0.09 % (W/V) sodium azide.
Preservative:	Sodium azide
Precaution of Use:	This product contains Sodium azide: a POISONOUS AND HAZARDOUS SUBSTANCE which should be handled by trained staff only.
Storage:	4 °C,-20 °C
Storage Comment:	Maintain refrigerated at 2-8 °C for up to 6 months. For long term storage store at -20 °C in small aliquots to prevent freeze-thaw cycles.
Expiry Date:	6 months



Western Blotting

Image 1. Western blot analysis of PR48 antibody (N-term) (ABIN392195 and ABIN2841900) in 293, NCI-, Hela, K562 and HL60 cell line lysates (35 µg/lane). PR48 (arrow) was detected using the purified Pab.