

Datasheet for ABIN392200
anti-BACE1 antibody (AA 476-501)[Go to Product page](#)

2 Images

Overview

Quantity:	400 µL
Target:	BACE1
Binding Specificity:	AA 476-501
Reactivity:	Human, Mouse
Host:	Rabbit
Clonality:	Polyclonal
Conjugate:	This BACE1 antibody is un-conjugated
Application:	Western Blotting (WB)

Product Details

Immunogen:	This BACE antibody is generated from rabbits immunized with a KLH conjugated synthetic peptide between 476-501 amino acids from human BACE.
Clone:	RB7137
Isotype:	Ig Fraction
Predicted Reactivity:	B, Rat
Purification:	This antibody is prepared by Saturated Ammonium Sulfate (SAS) precipitation followed by dialysis against PBS.

Target Details

Target:	BACE1
---------	-------

Target Details

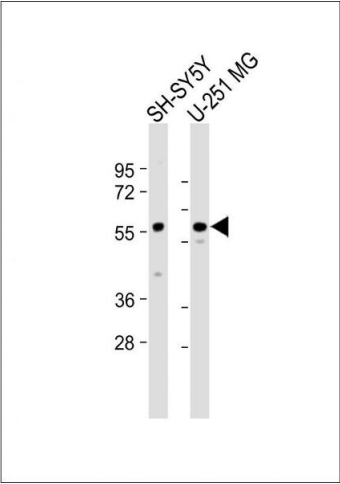
Alternative Name:	BACE (BACE1 Products)
Background:	Cerebral deposition of amyloid beta peptide is an early and critical feature of Alzheimer's disease. Amyloid beta peptide is generated by proteolytic cleavage of amyloid precursor protein (APP) by two proteases, one of which is BACE. This protein, a member of the peptidase A1 protein family, is a type I integral membrane glycoprotein and aspartic protease that is found mainly in the Golgi.
Molecular Weight:	55764
Gene ID:	23621
NCBI Accession:	NP_001193978 , NP_036236 , NP_620427 , NP_620428 , NP_620429
UniProt:	P56817

Application Details

Application Notes:	WB: 1:1000. WB: 1:1000
Restrictions:	For Research Use only

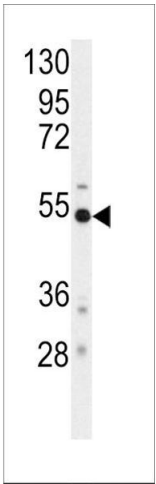
Handling

Format:	Liquid
Buffer:	Purified polyclonal antibody supplied in PBS with 0.09 % (W/V) sodium azide.
Preservative:	Sodium azide
Precaution of Use:	This product contains Sodium azide: a POISONOUS AND HAZARDOUS SUBSTANCE which should be handled by trained staff only.
Storage:	4 °C, -20 °C
Storage Comment:	Maintain refrigerated at 2-8 °C for up to 6 months. For long term storage store at -20 °C in small aliquots to prevent freeze-thaw cycles.
Expiry Date:	6 months



Western Blotting

Image 1. All lanes : Anti-Phospho-BACE Antibody, ctrl at 1:1000 dilution Lane 1: SH-SY5Y whole cell lysate Lane 2: U-251 MG whole cell lysate Lysates/proteins at 20 µg per lane. Secondary Goat Anti-Rabbit IgG, (H+L), Peroxidase conjugated at 1/10000 dilution. Predicted band size : 56 kDa Blocking/Dilution buffer: 5 % NFDM/TBST.



Western Blotting

Image 2. Western blot analysis of anti-BACE Antibody (ABIN392200 and ABIN2841901) in mouse cerebellum tissue lysates (35 µg/lane). BACE (arrow) was detected using the purified Pab.