



[Go to Product page](#)

Datasheet for ABIN392207

anti-LTBP1 antibody (C-Term)

2 Images

1 Publication

Overview

Quantity:	400 µL
Target:	LTBP1
Binding Specificity:	AA 1493-1525, C-Term
Reactivity:	Mouse, Human
Host:	Rabbit
Clonality:	Polyclonal
Conjugate:	This LTBP1 antibody is un-conjugated
Application:	Western Blotting (WB), Immunohistochemistry (Paraffin-embedded Sections) (IHC (p))

Product Details

Immunogen:	This LTBP1 antibody is generated from rabbits immunized with a KLH conjugated synthetic peptide between 1493-1525 amino acids from the C-terminal region of human LTBP1.
Clone:	RB14971
Isotype:	Ig Fraction
Purification:	This antibody is prepared by Saturated Ammonium Sulfate (SAS) precipitation followed by dialysis against PBS.

Target Details

Target:	LTBP1
Alternative Name:	LTBP1 (LTBP1 Products)

Target Details

Background:	LTBP1 may be involved in the assembly, secretion and targeting of TGFB1 to sites at which it is stored and/or activated. This protein may play critical roles in controlling and directing the activity of TGFB1, and it may have a structural role in the extra cellular matrix (ECM).
Molecular Weight:	186796
Gene ID:	4052
NCBI Accession:	NP_000618 , NP_001159736 , NP_001159737 , NP_001159738 , NP_996826
UniProt:	Q14766
Pathways:	Maintenance of Protein Location , Growth Factor Binding

Application Details

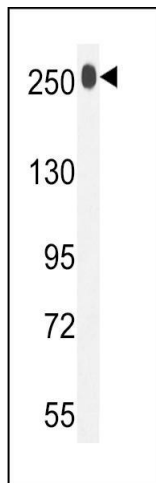
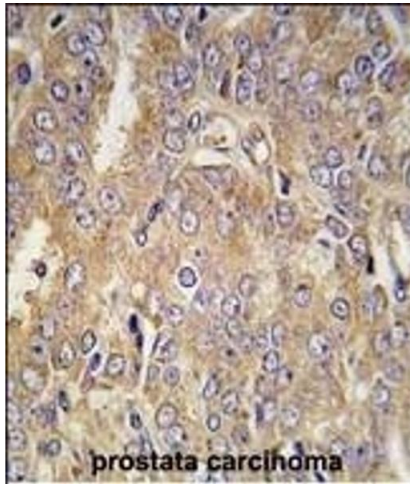
Application Notes:	WB: 1:1000. IHC-P: 1:10~50
Restrictions:	For Research Use only

Handling

Format:	Liquid
Buffer:	Purified polyclonal antibody supplied in PBS with 0.09 % (W/V) sodium azide.
Preservative:	Sodium azide
Precaution of Use:	This product contains Sodium azide: a POISONOUS AND HAZARDOUS SUBSTANCE which should be handled by trained staff only.
Storage:	4 °C,-20 °C
Storage Comment:	Maintain refrigerated at 2-8 °C for up to 6 months. For long term storage store at -20 °C in small aliquots to prevent freeze-thaw cycles.
Expiry Date:	6 months

Publications

Product cited in:	Surowiec, Battle, Ward, Schlecht, Khoury, Robbins, Wojtys, Caird, Kozloff: "A xenograft model to evaluate the bone forming effects of sclerostin antibody in human bone derived from pediatric osteogenesis imperfecta patients." in: Bone , Vol. 130, pp. 115118, (2020) (PubMed).
-------------------	--



Immunohistochemistry (Paraffin-embedded Sections)

Image 1. Formalin-fixed and paraffin-embedded human prostata carcinoma tissue reacted with LTBP1 antibody (C-term) (ABIN392207 and ABIN2841907) , which was peroxidase-conjugated to the secondary antibody, followed by DAB staining. This data demonstrates the use of this antibody for immunohistochemistry, clinical relevance has not been evaluated.

Western Blotting

Image 2. LTBP1 Antibody (C-term) (ABIN392207 and ABIN2841907) western blot analysis in mouse bladder tissue lysates (35 µg/lane). This demonstrates the LTBP1 antibody detected the LTBP1 protein (arrow).