



[Go to Product page](#)

Datasheet for ABIN392213
anti-WBP2 antibody (N-Term)

2 Images

Overview

| | |
|----------------------|--|
| Quantity: | 400 µL |
| Target: | WBP2 |
| Binding Specificity: | AA 19-47, N-Term |
| Reactivity: | Human |
| Host: | Rabbit |
| Clonality: | Polyclonal |
| Conjugate: | This WBP2 antibody is un-conjugated |
| Application: | Western Blotting (WB), Immunohistochemistry (Paraffin-embedded Sections) (IHC (p)) |

Product Details

| | |
|-----------------------|--|
| Immunogen: | This WBP2 antibody is generated from rabbits immunized with a KLH conjugated synthetic peptide between 19-47 amino acids from the N-terminal region of human WBP2. |
| Clone: | RB15664 |
| Isotype: | Ig Fraction |
| Predicted Reactivity: | M, Rat |
| Purification: | This antibody is prepared by Saturated Ammonium Sulfate (SAS) precipitation followed by dialysis against PBS. |

Target Details

| | |
|---------|------|
| Target: | WBP2 |
|---------|------|

Target Details

| | |
|-------------------|--|
| Alternative Name: | WBP2 (WBP2 Products) |
| Background: | The globular WW domain is composed of 38 to 40 semiconserved amino acids shared by proteins of diverse functions including structural, regulatory, and signaling proteins. The domain is involved in mediating protein-protein interactions through the binding of polyproline ligands. WBP2 is a WW domain binding protein, which binds to the WW domain of Yes kinase-associated protein by its PY motifs. The function of this protein has not been determined. |
| Molecular Weight: | 28087 |
| Gene ID: | 23558 |
| NCBI Accession: | NP_036610 |
| UniProt: | Q969T9 |

Application Details

| | |
|--------------------|-----------------------------|
| Application Notes: | WB: 1:1000. IHC-P: 1:50~100 |
| Restrictions: | For Research Use only |

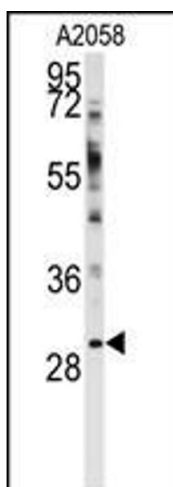
Handling

| | |
|--------------------|--|
| Format: | Liquid |
| Buffer: | Purified polyclonal antibody supplied in PBS with 0.09 % (W/V) sodium azide. |
| Preservative: | Sodium azide |
| Precaution of Use: | This product contains Sodium azide: a POISONOUS AND HAZARDOUS SUBSTANCE which should be handled by trained staff only. |
| Storage: | 4 °C, -20 °C |
| Storage Comment: | Maintain refrigerated at 2-8 °C for up to 6 months. For long term storage store at -20 °C in small aliquots to prevent freeze-thaw cycles. |
| Expiry Date: | 6 months |



Immunohistochemistry (Paraffin-embedded Sections)

Image 1. WBP2 Antibody (N-term) A immunohistochemistry analysis in formalin fixed and paraffin embedded human brain tissue followed by peroxidase conjugation of the secondary antibody and DAB staining. This data demonstrates the use of WBP2 Antibody (N-term) for immunohistochemistry. Clinical relevance has not been evaluated.



Western Blotting

Image 2. Western blot analysis of anti-WBP2 Antibody (N-term) (ABIN392213 and ABIN2841909) in cell line lysates (35 µg/lane). WBP2 (arrow) was detected using the purified Pab.