

Datasheet for ABIN392215
anti-PRKCDBP antibody (AA 113-144)[Go to Product page](#)

2 Images

Overview

Quantity:	400 µL
Target:	PRKCDBP
Binding Specificity:	AA 113-144
Reactivity:	Human
Host:	Rabbit
Clonality:	Polyclonal
Conjugate:	This PRKCDBP antibody is un-conjugated
Application:	Western Blotting (WB)

Product Details

Immunogen:	This PRKCDBP antibody is generated from rabbits immunized with a KLH conjugated synthetic peptide between 113-144 amino acids from the Central region of human PRKCDBP.
Clone:	RB15665
Isotype:	Ig Fraction
Purification:	This antibody is prepared by Saturated Ammonium Sulfate (SAS) precipitation followed by dialysis against PBS.

Target Details

Target:	PRKCDBP
Alternative Name:	PRKCDBP (PRKCDBP Products)

Target Details

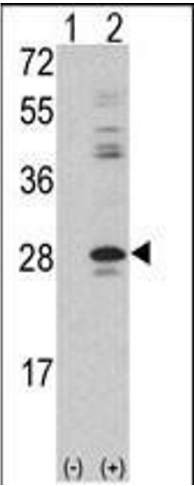
Background:	PRKCDBP was identified as a binding protein of the protein kinase C, delta (PRKCD). The expression of this protein in cultured cell lines is strongly induced by serum starvation, and was found to be down-regulated in various cancer cell lines, suggesting the possible tumor suppressor function of this protein.
Molecular Weight:	27701
Gene ID:	112464
NCBI Accession:	NP_659477
UniProt:	Q969G5

Application Details

Application Notes:	WB: 1:1000. WB: 1:1000
Restrictions:	For Research Use only

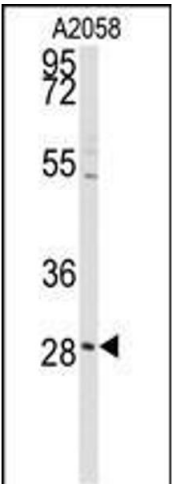
Handling

Format:	Liquid
Buffer:	Purified polyclonal antibody supplied in PBS with 0.09 % (W/V) sodium azide.
Preservative:	Sodium azide
Precaution of Use:	This product contains Sodium azide: a POISONOUS AND HAZARDOUS SUBSTANCE which should be handled by trained staff only.
Storage:	4 °C,-20 °C
Storage Comment:	Maintain refrigerated at 2-8 °C for up to 6 months. For long term storage store at -20 °C in small aliquots to prevent freeze-thaw cycles.
Expiry Date:	6 months



Western Blotting

Image 1. Western blot analysis of PRKCDBP (arrow) using rabbit polyclonal PRKCDBP Antibody (Center) (ABIN392215 and ABIN2841911). 293 cell lysates (2 µg/lane) either nontransfected (Lane 1) or transiently transfected with the PRKCDBP gene (Lane 2) (Origene Technologies).



Western Blotting

Image 2. Western blot analysis of anti-PRKCDBP Antibody (Center) (ABIN392215 and ABIN2841911) in cell line lysates (35 µg/lane). PRKCDBP (arrow) was detected using the purified Pab.