

Datasheet for ABIN392229
anti-PHLPP2 antibody (N-Term)[Go to Product page](#)

1 Image

Overview

Quantity:	400 µL
Target:	PHLPP2
Binding Specificity:	AA 4-31, N-Term
Reactivity:	Human
Host:	Rabbit
Clonality:	Polyclonal
Conjugate:	This PHLPP2 antibody is un-conjugated
Application:	Western Blotting (WB)

Product Details

Immunogen:	This PHLPP2 antibody is generated from rabbits immunized with a KLH conjugated synthetic peptide between 4-31 amino acids from the N-terminal region of human PHLPP2.
Clone:	RB15006
Isotype:	Ig Fraction
Predicted Reactivity:	M
Purification:	This antibody is prepared by Saturated Ammonium Sulfate (SAS) precipitation followed by dialysis against PBS.

Target Details

Target:	PHLPP2
---------	--------

Target Details

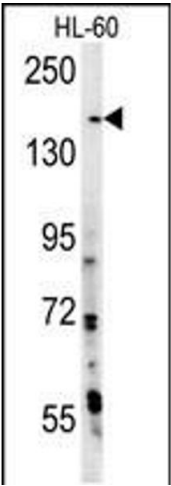
Alternative Name:	PHLPP2 (PHLPP2 Products)
Background:	PHLPP2 is a protein phosphatase that specifically mediates dephosphorylation of 'Ser-473' of AKT1. This protein regulates the balance between cell survival and apoptosis through a cascade that primarily alters the function of transcription factors that regulate pro- and antiapoptotic genes. Dephosphorylation of 'Ser-473' of AKT1 triggers apoptosis and decrease cell proliferation. It also controls the phosphorylation of AKT3.
Molecular Weight:	146751
Gene ID:	23035
NCBI Accession:	NP_055835
UniProt:	Q6ZVD8
Pathways:	PI3K-Akt Signaling , Fc-epsilon Receptor Signaling Pathway

Application Details

Application Notes:	WB: 1:1000
Restrictions:	For Research Use only

Handling

Format:	Liquid
Buffer:	Purified polyclonal antibody supplied in PBS with 0.09 % (W/V) sodium azide.
Preservative:	Sodium azide
Precaution of Use:	This product contains Sodium azide: a POISONOUS AND HAZARDOUS SUBSTANCE which should be handled by trained staff only.
Storage:	4 °C,-20 °C
Storage Comment:	Maintain refrigerated at 2-8 °C for up to 6 months. For long term storage store at -20 °C in small aliquots to prevent freeze-thaw cycles.
Expiry Date:	6 months



Western Blotting

Image 1. PHL Antibody (N-term) (ABIN392229 and ABIN2841922) western blot analysis in HL-60 cell line lysates (15 µg/lane). This demonstrates the PHL antibody detected the PHL protein (arrow).