

Datasheet for ABIN392241

anti-ACVRL1 antibody (N-Term)

5 Images

4 Publications

[Go to Product page](#)

Overview

Quantity:	400 µL
Target:	ACVRL1
Binding Specificity:	AA 38-68, N-Term
Reactivity:	Human, Mouse
Host:	Rabbit
Clonality:	Polyclonal
Application:	Western Blotting (WB), Flow Cytometry (FACS), Immunohistochemistry (Paraffin-embedded Sections) (IHC (p))

Product Details

Immunogen:	This ACVRL1 antibody is generated from rabbits immunized with a KLH conjugated synthetic peptide between 38-68 amino acids from the N-terminal region of human ACVRL1.
Clone:	RB03736
Isotype:	Ig Fraction
Purification:	This antibody is prepared by Saturated Ammonium Sulfate (SAS) precipitation followed by dialysis against PBS.

Target Details

Target:	ACVRL1
Alternative Name:	ACVRL1 (ACVRL1 Products)
Background:	ACVRL1 is a type I cell-surface receptor for the TGF-beta superfamily of ligands. It shares with

Target Details

other type I receptors a high degree of similarity in serine-threonine kinase subdomains, a glycine- and serine-rich region (called the GS domain) preceding the kinase domain, and a short C-terminal tail. This protein, sometimes termed ALK1, shares similar domain structures with other closely related ALK or activin receptor-like kinase proteins that form a subfamily of receptor serine/threonine kinases. Mutations in this gene are associated with hemorrhagic telangiectasia type 2, also known as Rendu-Osler-Weber syndrome 2.

Molecular Weight:	56124
Gene ID:	94
NCBI Accession:	NP_000011 , NP_001070869
UniProt:	P37023

Application Details

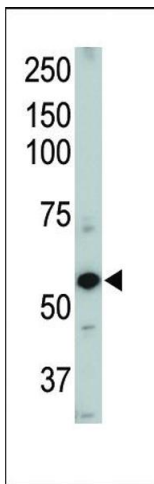
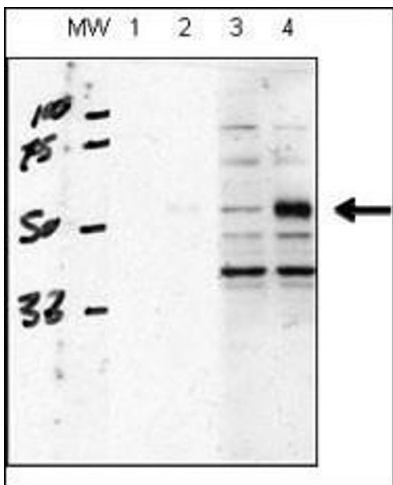
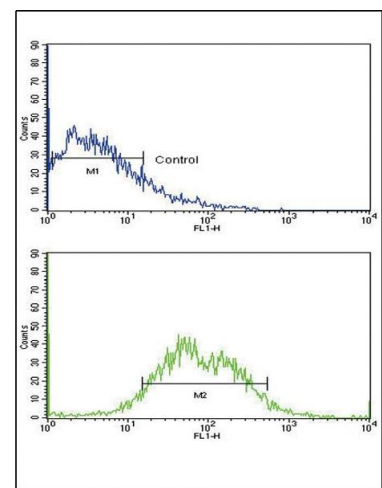
Application Notes:	WB: 1:1000. WB: 1:1000. WB: 1:1000. IHC-P: 1:50~100. FC: 1:10~50
Restrictions:	For Research Use only

Handling

Format:	Liquid
Buffer:	Purified polyclonal antibody supplied in PBS with 0.09 % (W/V) sodium azide.
Preservative:	Sodium azide
Precaution of Use:	This product contains Sodium azide: a POISONOUS AND HAZARDOUS SUBSTANCE which should be handled by trained staff only.
Storage:	4 °C, -20 °C
Storage Comment:	Maintain refrigerated at 2-8 °C for up to 6 months. For long term storage store at -20 °C in small aliquots to prevent freeze-thaw cycles.
Expiry Date:	6 months

Publications

Product cited in:	Sadeghi, Ullenhag, Wagenius, Tötterman, Eriksson: "Rapid expansion of T cells: Effects of culture and cryopreservation and importance of short-term cell recovery." in: Acta oncologica (Stockholm, Sweden) , Vol. 52, Issue 5, pp. 978-86, (2013) (PubMed).
-------------------	---



Flow Cytometry

Image 1. Flow cytometric analysis of HepG2 cells using ACVRL1 Antibody (N-term) (bottom histogram) compared to a negative control cell (top histogram). FITC-conjugated goat-anti-rabbit secondary antibodies were used for the analysis.

Western Blotting

Image 2. human chondrocytes (C28/I2 cells), transfected with empty vector (lane 1, 3) or ACVRL1(lane 2, 4). RI lysis buffer, 20 µg/lane of protein, primary antibody dilution 1:1000, blocking solution is 5 % milk in TBST (lane 1 and 2), 5 % BSA in TBST (lane 3 and 4). Data courtesy of Kenneth Finnson, Montreal General Hospital.

Western Blotting

Image 3. Western blot of ACVRL1 Pab (ABIN392241 and ABIN2841932). TOP LEFT: Mouse heart tissue lysate.

Please check the [product details page](#) for more images. Overall 5 images are available for ABIN392241.