

Datasheet for ABIN392279

anti-TGFBR1 antibody (AA 134-163)**2** Images**4** Publications[Go to Product page](#)

Overview

Quantity:	400 µL
Target:	TGFBR1
Binding Specificity:	AA 134-163
Reactivity:	Human
Host:	Rabbit
Clonality:	Polyclonal
Conjugate:	This TGFBR1 antibody is un-conjugated
Application:	Western Blotting (WB), Immunohistochemistry (IHC)

Product Details

Immunogen:	This TGF Beta Receptor I antibody is generated from rabbits immunized with a KLH conjugated synthetic peptide between 134-163 amino acids from the Central region of human TGF Beta Receptor I.
Clone:	RB03530
Isotype:	Ig Fraction
Predicted Reactivity:	B, M, Pig, Rat
Purification:	This antibody is prepared by Saturated Ammonium Sulfate (SAS) precipitation followed by dialysis against PBS.

Target Details

Target:	TGFBR1
---------	--------

Target Details

Alternative Name:	TGF beta Receptor I (TGFR1) (TGFR1 Products)
Background:	The protein encoded by this gene forms a heteromeric complex with type II TGF-beta receptors when bound to TGF-beta, transducing the TGF-beta signal from the cell surface to the cytoplasm. The encoded protein is a serine/threonine protein kinase. Mutations in this gene have been associated with Loeys-Dietz aortic aneurysm syndrome (LDAS).
Molecular Weight:	55960
Gene ID:	7046
NCBI Accession:	NP_001124388 , NP_004603
UniProt:	P36897
Pathways:	Growth Factor Binding

Application Details

Application Notes:	WB: 1:1000. IHC-P: 1:50~100
Restrictions:	For Research Use only

Handling

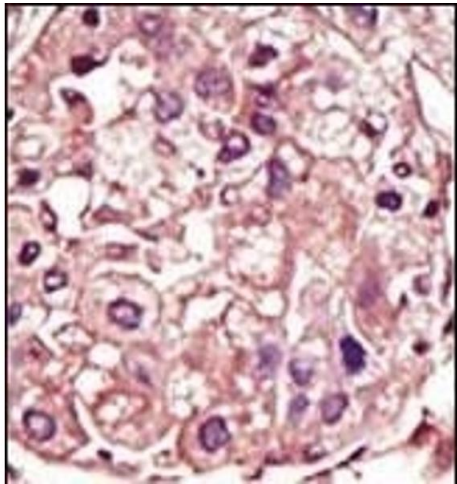
Format:	Liquid
Buffer:	Purified polyclonal antibody supplied in PBS with 0.09 % (W/V) sodium azide.
Preservative:	Sodium azide
Precaution of Use:	This product contains Sodium azide: a POISONOUS AND HAZARDOUS SUBSTANCE which should be handled by trained staff only.
Handling Advice:	Avoid freeze-thaw cycles.
Storage:	4 °C,-20 °C
Storage Comment:	Maintain refrigerated at 2-8 °C for up to 6 months. For long term storage store at -20 °C in small aliquots.
Expiry Date:	6 months

Publications

Product cited in:	Nasr, Mukhopadhyay, Zhang, Katzenstein: "Immunohistochemical markers in diagnosis of papillary thyroid carcinoma: Utility of HBME1 combined with CK19 immunostaining." in: Modern
-------------------	--

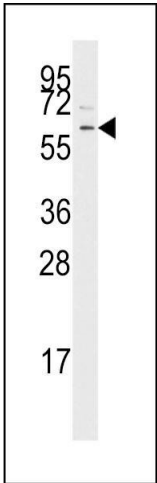
pathology : an official journal of the United States and Canadian Academy of Pathology, Inc,
Vol. 19, Issue 12, pp. 1631-7, (2006) ([PubMed](#)).

Images



Immunohistochemistry (Paraffin-embedded Sections)

Image 1. Formalin-fixed and paraffin-embedded human cancer tissue reacted with the primary antibody, which was peroxidase-conjugated to the secondary antibody, followed by AEC staining. This data demonstrates the use of this antibody for immunohistochemistry, clinical relevance has not been evaluated. BC = breast carcinoma, HC = hepatocarcinoma.



Western Blotting

Image 2. Western blot analysis of anti-TGFBR1 Pab (ABIN392279 and ABIN2841947) in Jurkat cell line lysates (35 µg/lane). TGFBR1 (arrow) was detected using the purified Pab.