



[Go to Product page](#)

Datasheet for ABIN392290

anti-Butyrylcholinesterase antibody (AA 385-415)

1 Image

Overview

Quantity:	400 µL
Target:	Butyrylcholinesterase (BCHE)
Binding Specificity:	AA 385-415
Reactivity:	Human
Host:	Rabbit
Clonality:	Polyclonal
Conjugate:	This Butyrylcholinesterase antibody is un-conjugated
Application:	Western Blotting (WB)

Product Details

Immunogen:	This BCHE antibody is generated from rabbits immunized with a KLH conjugated synthetic peptide between 385-415 amino acids from the Central region of human BCHE.
Clone:	RB17724
Isotype:	Ig Fraction
Purification:	This antibody is prepared by Saturated Ammonium Sulfate (SAS) precipitation followed by dialysis against PBS.

Target Details

Target:	Butyrylcholinesterase (BCHE)
Alternative Name:	BCHE (BCHE Products)

Target Details

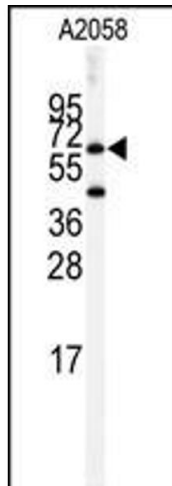
Background:	Mutant proteins of BCHE are responsible for suxamethonium sensitivity. Homozygous persons sustain prolonged apnea after administration of the muscle relaxant suxamethonium in connection with surgical anesthesia. The activity of pseudocholinesterase in the serum is low and its substrate behavior is atypical. In the absence of the relaxant, the homozygote is at no known disadvantage.
Molecular Weight:	68418
Gene ID:	590
NCBI Accession:	NP_000046
UniProt:	P06276
Pathways:	Peptide Hormone Metabolism

Application Details

Application Notes:	WB: 1:1000
Restrictions:	For Research Use only

Handling

Format:	Liquid
Buffer:	Purified polyclonal antibody supplied in PBS with 0.09 % (W/V) sodium azide.
Preservative:	Sodium azide
Precaution of Use:	This product contains Sodium azide: a POISONOUS AND HAZARDOUS SUBSTANCE which should be handled by trained staff only.
Storage:	4 °C, -20 °C
Storage Comment:	Maintain refrigerated at 2-8 °C for up to 6 months. For long term storage store at -20 °C in small aliquots to prevent freeze-thaw cycles.
Expiry Date:	6 months



Western Blotting

Image 1. Western blot analysis of anti-BCHE Antibody (Center) (ABIN392290 and ABIN2841951) in cell line lysates (35 µg/lane). BCHE (arrow) was detected using the purified Pab.