

Datasheet for ABIN392297  
**anti-Cyclin C antibody (C-Term)**[Go to Product page](#)

## 1 Image

## Overview

Quantity:	400 µL
Target:	Cyclin C (CCNC)
Binding Specificity:	AA 221-249, C-Term
Reactivity:	Human
Host:	Rabbit
Clonality:	Polyclonal
Conjugate:	This Cyclin C antibody is un-conjugated
Application:	Western Blotting (WB)

## Product Details

Immunogen:	This Cyclin C (CCNC) antibody is generated from rabbits immunized with a KLH conjugated synthetic peptide between 221-249 amino acids from the C-terminal region of human Cyclin C (CCNC).
Clone:	RB14885
Isotype:	Ig Fraction
Predicted Reactivity:	B, C, M, Rat, X
Purification:	This antibody is prepared by Saturated Ammonium Sulfate (SAS) precipitation followed by dialysis against PBS.

## Target Details

Target:	Cyclin C (CCNC)
---------	-----------------

## Target Details

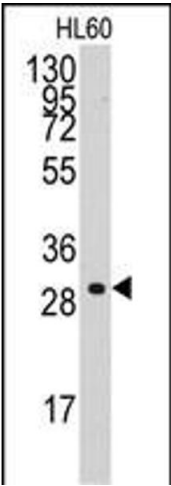
Abstract:	<a href="#">CCNC Products</a>
Background:	CCNC is a member of the cyclin family of proteins. This protein interacts with cyclin-dependent kinase 8 and induces the phosphorylation of the carboxy-terminal domain of the large subunit of RNA polymerase II.
Molecular Weight:	33243
Gene ID:	892
NCBI Accession:	<a href="#">NP_001013417</a> , <a href="#">NP_005181</a>
UniProt:	<a href="#">P24863</a>
Pathways:	<a href="#">Cell Division Cycle</a> , <a href="#">Regulation of Lipid Metabolism by PPARalpha</a>

## Application Details

Application Notes:	WB: 1:1000
Restrictions:	For Research Use only

## Handling

Format:	Liquid
Buffer:	Purified polyclonal antibody supplied in PBS with 0.09 % (W/V) sodium azide.
Preservative:	Sodium azide
Precaution of Use:	This product contains Sodium azide: a POISONOUS AND HAZARDOUS SUBSTANCE which should be handled by trained staff only.
Storage:	4 °C, -20 °C
Storage Comment:	Maintain refrigerated at 2-8 °C for up to 6 months. For long term storage store at -20 °C in small aliquots to prevent freeze-thaw cycles.
Expiry Date:	6 months



Western Blotting

**Image 1.** Western blot analysis of anti-CCNC Antibody (C-term) (ABIN392297 and ABIN2841953) in HL60 cell line lysates (35 µg/lane). CCNC(arrow) was detected using the purified Pab.