

Datasheet for ABIN392317  
**anti-ALDH1L1 antibody (C-Term)**[Go to Product page](#)

## 2 Images

## Overview

Quantity:	400 µL
Target:	ALDH1L1
Binding Specificity:	AA 717-746, C-Term
Reactivity:	Human, Mouse
Host:	Rabbit
Clonality:	Polyclonal
Conjugate:	This ALDH1L1 antibody is un-conjugated
Application:	Western Blotting (WB), Immunohistochemistry (Paraffin-embedded Sections) (IHC (p))

## Product Details

Immunogen:	This ALDH1L1 antibody is generated from rabbits immunized with a KLH conjugated synthetic peptide between 717-746 amino acids from the C-terminal region of human ALDH1L1.
Clone:	RB16827
Isotype:	Ig Fraction
Purification:	This antibody is prepared by Saturated Ammonium Sulfate (SAS) precipitation followed by dialysis against PBS.

## Target Details

Target:	ALDH1L1
Alternative Name:	ALDH1L1 ( <a href="#">ALDH1L1 Products</a> )

## Target Details

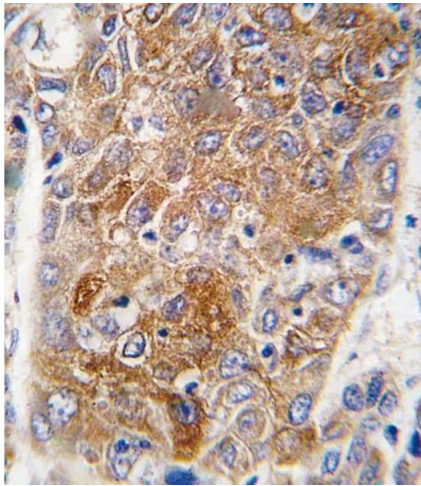
Background:	ALDH1L1 catalyzes the conversion of 10-formyltetrahydrofolate, NADP, and water to tetrahydrofolate, NADPH, and carbon dioxide. The encoded protein belongs to the aldehyde dehydrogenase family and is responsible for formate oxidation in vivo. Deficiencies in this gene can result in an accumulation of formate and subsequent methanol poisoning.
Molecular Weight:	98829
Gene ID:	10840
NCBI Accession:	<a href="#">NP_001257293</a> , <a href="#">NP_001257294</a> , <a href="#">NP_036322</a>
UniProt:	<a href="#">O75891</a>

## Application Details

Application Notes:	WB: 1:1000. IHC-P: 1:10~50
Restrictions:	For Research Use only

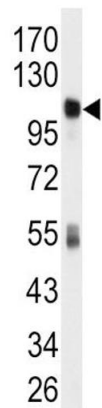
## Handling

Format:	Liquid
Buffer:	Purified polyclonal antibody supplied in PBS with 0.09 % (W/V) sodium azide.
Preservative:	Sodium azide
Precaution of Use:	This product contains Sodium azide: a POISONOUS AND HAZARDOUS SUBSTANCE which should be handled by trained staff only.
Storage:	4 °C,-20 °C
Storage Comment:	Maintain refrigerated at 2-8 °C for up to 6 months. For long term storage store at -20 °C in small aliquots to prevent freeze-thaw cycles.
Expiry Date:	6 months



**Immunohistochemistry (Paraffin-embedded Sections)**

**Image 1.** Formalin-fixed and paraffin-embedded human hepatocarcinoma tissue reacted with ALDH1L1 antibody (C-term), which was peroxidase-conjugated to the secondary antibody, followed by DAB staining. This data demonstrates the use of this antibody for immunohistochemistry, clinical relevance has not been evaluated.



**Western Blotting**

**Image 2.** Western blot analysis of anti-ALDH1L1 Antibody (C-term) (ABIN392317 and ABIN2841968) in mouse liver tissue lysates (35 µg/lane). ALDH1L1(arrow) was detected using the purified Pab.