

Datasheet for ABIN392338
anti-AAK1 antibody (C-Term)[Go to Product page](#)

1 Image

Overview

Quantity:	400 µL
Target:	AAK1
Binding Specificity:	AA 790-819, C-Term
Reactivity:	Human
Host:	Rabbit
Clonality:	Polyclonal
Conjugate:	This AAK1 antibody is un-conjugated
Application:	Western Blotting (WB)

Product Details

Immunogen:	This AAK1 antibody is generated from rabbits immunized with a KLH conjugated synthetic peptide between 790-819 amino acids from the C-terminal region of human AAK1.
Clone:	RB16779
Isotype:	Ig Fraction
Predicted Reactivity:	B, M, Pig, Rat
Purification:	This antibody is prepared by Saturated Ammonium Sulfate (SAS) precipitation followed by dialysis against PBS.

Target Details

Target:	AAK1
---------	------

Target Details

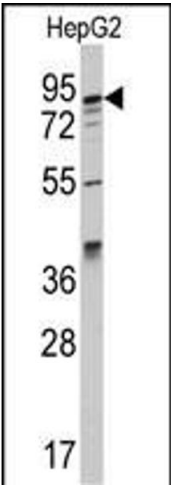
Alternative Name:	AAK1 (AAK1 Products)
Background:	Adaptor-related protein complex 2 (AP-2 complexes) functions during receptor-mediated endocytosis to trigger clathrin assembly, interact with membrane-bound receptors, and recruit endocytic accessory factors. AAK1 is a member of the SNF1 subfamily of Ser/Thr protein kinases. The protein interacts with and phosphorylates a subunit of the AP-2 complex, which promotes binding of AP-2 to sorting signals found in membrane-bound receptors and subsequent receptor endocytosis. Its kinase activity is stimulated by clathrin.
Molecular Weight:	103885
Gene ID:	22848
NCBI Accession:	NP_055726
UniProt:	Q2M2I8

Application Details

Application Notes:	WB: 1:1000
Restrictions:	For Research Use only

Handling

Format:	Liquid
Buffer:	Purified polyclonal antibody supplied in PBS with 0.09 % (W/V) sodium azide.
Preservative:	Sodium azide
Precaution of Use:	This product contains Sodium azide: a POISONOUS AND HAZARDOUS SUBSTANCE which should be handled by trained staff only.
Storage:	4 °C,-20 °C
Storage Comment:	Maintain refrigerated at 2-8 °C for up to 6 months. For long term storage store at -20 °C in small aliquots to prevent freeze-thaw cycles.
Expiry Date:	6 months



Western Blotting

Image 1. Western blot analysis of anti-K1 Antibody (C-term) (ABIN392338 and ABIN2841979) in HepG2 cell line lysates (35 µg/lane). K1 (arrow) was detected using the purified Pab.