



[Go to Product page](#)

Datasheet for ABIN392348
anti-FKBP1B antibody (N-Term)

4 Images

Overview

Quantity:	400 µL
Target:	FKBP1B
Binding Specificity:	AA 16-46, N-Term
Reactivity:	Human, Mouse
Host:	Rabbit
Clonality:	Polyclonal
Conjugate:	This FKBP1B antibody is un-conjugated
Application:	Western Blotting (WB), Immunofluorescence (IF), Immunohistochemistry (Paraffin-embedded Sections) (IHC (p))

Product Details

Immunogen:	This FKBP1B antibody is generated from rabbits immunized with a KLH conjugated synthetic peptide between 16-46 amino acids from the N-terminal region of human FKBP1B.
Clone:	RB19308
Isotype:	Ig Fraction
Predicted Reactivity:	B, Rb, Rat
Purification:	This antibody is prepared by Saturated Ammonium Sulfate (SAS) precipitation followed by dialysis against PBS.

Target Details

Target:	FKBP1B
---------	--------

Target Details

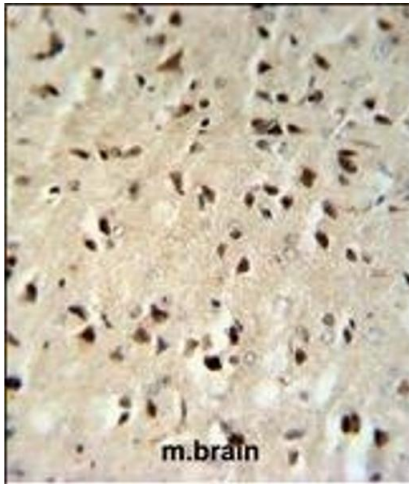
Alternative Name:	FKBP1B (FKBP1B Products)
Background:	FKBP1B is a member of the immunophilin protein family, which play a role in immunoregulation and basic cellular processes involving protein folding and trafficking. This protein is a cis-trans prolyl isomerase that binds the immunosuppressants FK506 and rapamycin. The protein is highly similar to the FK506-binding protein 1A. Its physiological role is thought to be in excitation-contraction coupling in cardiac muscle.
Molecular Weight:	11783
Gene ID:	2281
NCBI Accession:	NP_004107 , NP_473374
UniProt:	P68106
Pathways:	Hormone Transport , Negative Regulation of Hormone Secretion , Negative Regulation of Transporter Activity

Application Details

Application Notes:	IF: 1:10~50. WB: 1:1000. WB: 1:1000. IHC-P: 1:10~50
Restrictions:	For Research Use only

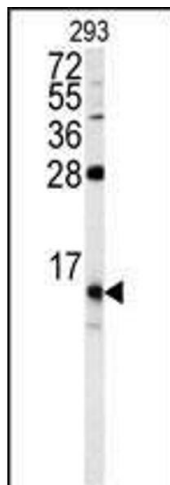
Handling

Format:	Liquid
Buffer:	Purified polyclonal antibody supplied in PBS with 0.09 % (W/V) sodium azide.
Preservative:	Sodium azide
Precaution of Use:	This product contains Sodium azide: a POISONOUS AND HAZARDOUS SUBSTANCE which should be handled by trained staff only.
Storage:	4 °C,-20 °C
Storage Comment:	Maintain refrigerated at 2-8 °C for up to 6 months. For long term storage store at -20 °C in small aliquots to prevent freeze-thaw cycles.
Expiry Date:	6 months



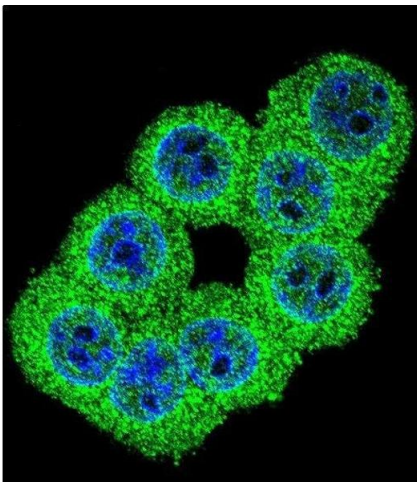
Immunohistochemistry (Paraffin-embedded Sections)

Image 1. FKBP1B Antibody (N-term) (ABIN392348 and ABIN2841987) IHC analysis in formalin fixed and paraffin embedded mouse brain tissue followed by peroxidase conjugation of the secondary antibody and DAB staining. This data demonstrates the use of the FKBP1B Antibody (N-term) for immunohistochemistry. Clinical relevance has not been evaluated.



Western Blotting

Image 2. Western blot analysis of FKBP1B antibody (N-term) (ABIN392348 and ABIN2841987) in 293 cell line lysates (35 µg/lane). FKBP1B (arrow) was detected using the purified Pab.



Immunofluorescence

Image 3. Confocal immunofluorescent analysis of FKBP1B Antibody (N-term) (ABIN392348 and ABIN2841987) with 293 cell followed by Alexa Fluor 488-conjugated goat anti-rabbit IgG (green). DAPI was used to stain the cell nuclear (blue).

Please check the [product details page](#) for more images. Overall 4 images are available for ABIN392348.