

Datasheet for ABIN392351
anti-GMFG antibody (N-Term)[2 Images](#)[2 Publications](#)[Go to Product page](#)

Overview

Quantity:	400 µL
Target:	GMFG
Binding Specificity:	AA 1-30, N-Term
Reactivity:	Human
Host:	Rabbit
Clonality:	Polyclonal
Conjugate:	This GMFG antibody is un-conjugated
Application:	Western Blotting (WB), Immunohistochemistry (Paraffin-embedded Sections) (IHC (p))

Product Details

Immunogen:	This GMFG antibody is generated from rabbits immunized with a KLH conjugated synthetic peptide between 1-30 amino acids from the N-terminal region of human GMFG.
Clone:	RB14976
Isotype:	Ig Fraction
Purification:	This antibody is prepared by Saturated Ammonium Sulfate (SAS) precipitation followed by dialysis against PBS.

Target Details

Target:	GMFG
Alternative Name:	GMFG (GMFG Products)

Target Details

Background: Glia maturation factor gamma (GMFG) is a cytokine-responsive protein in erythropoietin-induced and granulocyte-colony stimulating factor-induced hematopoietic lineage development. It may be involved in glial differentiation, neural regeneration, and inhibition of tumor cell proliferation.

Molecular Weight: 16801

Gene ID: 9535

NCBI Accession: [NP_004868](#)

UniProt: [O60234](#)

Application Details

Application Notes: WB: 1:1000. IHC-P: 1:10~50

Restrictions: For Research Use only

Handling

Format: Liquid

Buffer: Purified polyclonal antibody supplied in PBS with 0.09 % (W/V) sodium azide.

Preservative: Sodium azide

Precaution of Use: This product contains Sodium azide: a POISONOUS AND HAZARDOUS SUBSTANCE which should be handled by trained staff only.

Storage: 4 °C, -20 °C

Storage Comment: Maintain refrigerated at 2-8 °C for up to 6 months. For long term storage store at -20 °C in small aliquots to prevent freeze-thaw cycles.

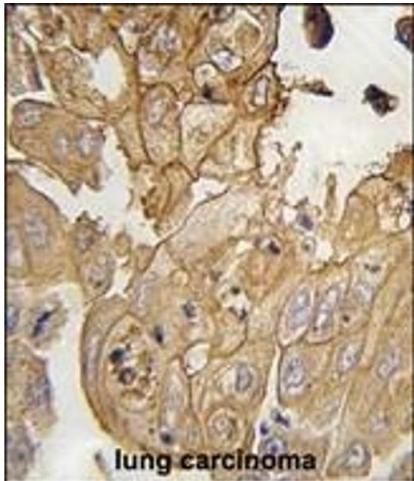
Expiry Date: 6 months

Publications

Product cited in: Humphrey, Newcomb, Yu, Hao, Yu, Krajewski, Du, Jhala: "Mixed lineage kinase-3 stabilizes and functionally cooperates with TRIBBLES-3 to compromise mitochondrial integrity in cytokine-induced death of pancreatic beta cells." in: **The Journal of biological chemistry**, Vol. 285, Issue 29, pp. 22426-36, (2010) ([PubMed](#)).

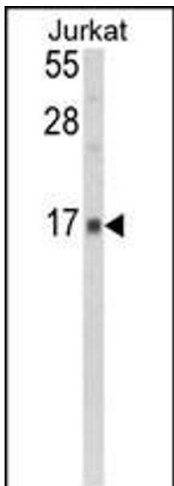
Nagao, Hayashi: "Mixed lineage kinase 2 and hippocalcin are localized in Lewy bodies of

Parkinson's disease." in: **Journal of the neurological sciences**, Vol. 281, Issue 1-2, pp. 51-4, (2009) ([PubMed](#)).



Immunohistochemistry (Paraffin-embedded Sections)

Image 1. Formalin-fixed and paraffin-embedded human lung carcinoma tissue reacted with GMFG antibody (N-term) (ABIN392351 and ABIN2841990) , which was peroxidase-conjugated to the secondary antibody, followed by DAB staining. This data demonstrates the use of this antibody for immunohistochemistry, clinical relevance has not been evaluated.



Western Blotting

Image 2. Western blot analysis of GMFG Antibody (N-term) (ABIN392351 and ABIN2841990) in Jurkat cell line lysates (35 µg/lane). GMFG (arrow) was detected using the purified Pab.