

Datasheet for ABIN392356  
**anti-ALDH4A1 antibody (C-Term)**[Go to Product page](#)

## 3 Images

## Overview

Quantity:	400 µL
Target:	ALDH4A1
Binding Specificity:	AA 533-561, C-Term
Reactivity:	Human
Host:	Rabbit
Clonality:	Polyclonal
Conjugate:	This ALDH4A1 antibody is un-conjugated
Application:	Western Blotting (WB), Immunohistochemistry (Paraffin-embedded Sections) (IHC (p))

## Product Details

Immunogen:	This ALDH4A1 antibody is generated from rabbits immunized with a KLH conjugated synthetic peptide between 533-561 amino acids from the C-terminal region of human ALDH4A1.
Clone:	RB16859
Isotype:	Ig Fraction
Purification:	This antibody is prepared by Saturated Ammonium Sulfate (SAS) precipitation followed by dialysis against PBS.

## Target Details

Target:	ALDH4A1
Alternative Name:	ALDH4A1 ( <a href="#">ALDH4A1 Products</a> )

## Target Details

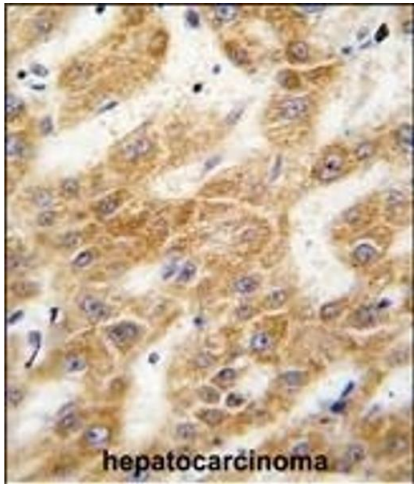
Background:	ALDH4A1 belongs to the aldehyde dehydrogenase family of proteins. This enzyme is a mitochondrial matrix NAD-dependent dehydrogenase which catalyzes the second step of the proline degradation pathway, converting pyrroline-5-carboxylate to glutamate. Deficiency of this enzyme is associated with type II hyperprolinemia, an autosomal recessive disorder characterized by accumulation of delta-1-pyrroline-5-carboxylate (P5C) and proline.
Molecular Weight:	61719
Gene ID:	8659
NCBI Accession:	<a href="#">NP_001154976</a> , <a href="#">NP_003739</a> , <a href="#">NP_733844</a>
UniProt:	<a href="#">P30038</a>
Pathways:	<a href="#">Monocarboxylic Acid Catabolic Process</a>

## Application Details

Application Notes:	WB: 1:1000. WB: 1:1000. IHC-P: 1:50~100
Restrictions:	For Research Use only

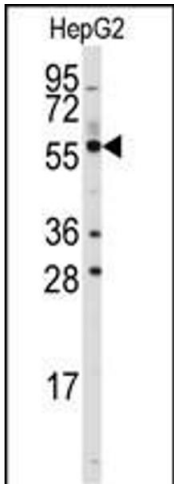
## Handling

Format:	Liquid
Buffer:	Purified polyclonal antibody supplied in PBS with 0.09 % (W/V) sodium azide.
Preservative:	Sodium azide
Precaution of Use:	This product contains Sodium azide: a POISONOUS AND HAZARDOUS SUBSTANCE which should be handled by trained staff only.
Storage:	4 °C, -20 °C
Storage Comment:	Maintain refrigerated at 2-8 °C for up to 6 months. For long term storage store at -20 °C in small aliquots to prevent freeze-thaw cycles.
Expiry Date:	6 months



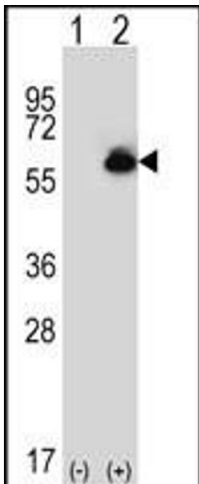
**Immunohistochemistry (Paraffin-embedded Sections)**

**Image 1.** Formalin-fixed and paraffin-embedded human hepatocarcinoma tissue reacted with ALDH4A1 antibody (C-term), which was peroxidase-conjugated to the secondary antibody, followed by DAB staining. This data demonstrates the use of this antibody for immunohistochemistry, clinical relevance has not been evaluated.



**Western Blotting**

**Image 2.** Western blot analysis of anti-ALDH4A1 Antibody (C-term) (ABIN392356 and ABIN2841995) in HepG2 cell line lysates (35 µg/lane). ALDH4A1 (arrow) was detected using the purified Pab.



**Western Blotting**

**Image 3.** Western blot analysis of ALDH4A1 (arrow) using rabbit polyclonal ALDH4A1 Antibody (C-term) (ABIN392356 and ABIN2841995). 293 cell lysates (2 µg/lane) either nontransfected (Lane 1) or transiently transfected (Lane 2) with the ALDH4A1 gene.