

Datasheet for ABIN392357

anti-ALDH4A1 antibody (AA 288-314)**3** Images[Go to Product page](#)

Overview

Quantity:	400 µL
Target:	ALDH4A1
Binding Specificity:	AA 288-314
Reactivity:	Human
Host:	Rabbit
Clonality:	Polyclonal
Application:	Western Blotting (WB), Immunohistochemistry (Paraffin-embedded Sections) (IHC (p))

Product Details

Immunogen:	This ALDH4A1 antibody is generated from rabbits immunized with a KLH conjugated synthetic peptide between 288-314 amino acids from the Central region of human ALDH4A1.
Clone:	RB16833
Isotype:	Ig Fraction
Purification:	This antibody is prepared by Saturated Ammonium Sulfate (SAS) precipitation followed by dialysis against PBS.

Target Details

Target:	ALDH4A1
Alternative Name:	ALDH4A1 (ALDH4A1 Products)
Background:	ALDH4A1 belongs to the aldehyde dehydrogenase family of proteins. This enzyme is a mitochondrial matrix NAD-dependent dehydrogenase which catalyzes the second step of the

Target Details

proline degradation pathway, converting pyrroline-5-carboxylate to glutamate. Deficiency of this enzyme is associated with type II hyperprolinemia, an autosomal recessive disorder characterized by accumulation of delta-1-pyrroline-5-carboxylate (P5C) and proline.

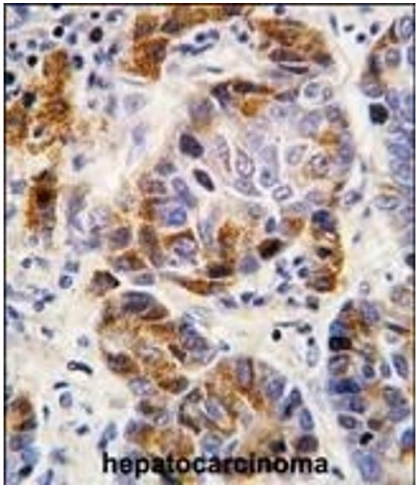
Molecular Weight:	61719
Gene ID:	8659
NCBI Accession:	NP_001154976 , NP_003739 , NP_733844
UniProt:	P30038
Pathways:	Monocarboxylic Acid Catabolic Process

Application Details

Application Notes:	WB: 1:1000. WB: 1:1000. IHC-P: 1:50~100
Restrictions:	For Research Use only

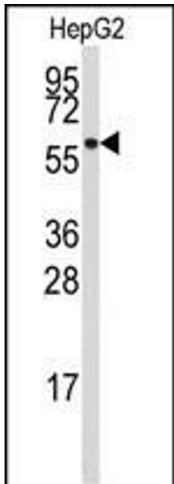
Handling

Format:	Liquid
Buffer:	Purified polyclonal antibody supplied in PBS with 0.09 % (W/V) sodium azide.
Preservative:	Sodium azide
Precaution of Use:	This product contains Sodium azide: a POISONOUS AND HAZARDOUS SUBSTANCE which should be handled by trained staff only.
Storage:	4 °C,-20 °C
Storage Comment:	Maintain refrigerated at 2-8 °C for up to 6 months. For long term storage store at -20 °C in small aliquots to prevent freeze-thaw cycles.
Expiry Date:	6 months



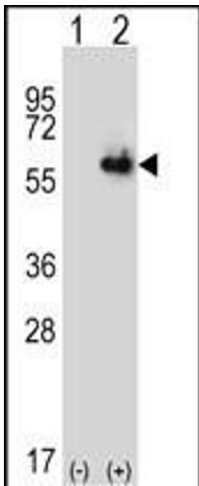
Immunohistochemistry (Paraffin-embedded Sections)

Image 1. Formalin-fixed and paraffin-embedded human hepatocarcinoma tissue reacted with ALDH4A1 antibody (Center), which was peroxidase-conjugated to the secondary antibody, followed by DAB staining. This data demonstrates the use of this antibody for immunohistochemistry, clinical relevance has not been evaluated.



Western Blotting

Image 2. Western blot analysis of anti-ALDH4A1 Antibody (Center) (ABIN392357 and ABIN2841996) in HepG2 cell line lysates (35 µg/lane). ALDH4A1 (arrow) was detected using the purified Pab.



Western Blotting

Image 3. Western blot analysis of ALDH4A1 (arrow) using rabbit polyclonal ALDH4A1 Antibody (Center) (ABIN392357 and ABIN2841996). 293 cell lysates (2 µg/lane) either nontransfected (Lane 1) or transiently transfected (Lane 2) with the ALDH4A1 gene.