

Datasheet for ABIN392361  
**anti-BCL2L13 antibody (AA 197-225)**[Go to Product page](#)

## 1 Image

## Overview

Quantity:	400 µL
Target:	BCL2L13
Binding Specificity:	AA 197-225
Reactivity:	Human
Host:	Rabbit
Clonality:	Polyclonal
Conjugate:	This BCL2L13 antibody is un-conjugated
Application:	Western Blotting (WB)

## Product Details

Immunogen:	This BCL2L13 antibody is generated from rabbits immunized with a KLH conjugated synthetic peptide between 197-225 amino acids from the Central region of human BCL2L13.
Clone:	RB16889
Isotype:	Ig Fraction
Purification:	This antibody is prepared by Saturated Ammonium Sulfate (SAS) precipitation followed by dialysis against PBS.

## Target Details

Target:	BCL2L13
Alternative Name:	BCL2L13 ( <a href="#">BCL2L13 Products</a> )

## Target Details

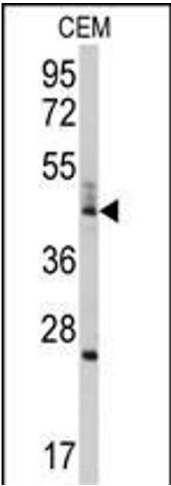
Background:	BCL2L10 belongs to the BCL-2 protein family. BCL-2 family members form hetero- or homodimers and act as anti- or pro-apoptotic regulators that are involved in a wide variety of cellular activities. The protein may promote the activation of caspase-3 and apoptosis.
Molecular Weight:	52723
Gene ID:	23786
NCBI Accession:	<a href="#">NP_001257655</a> , <a href="#">NP_001257656</a> , <a href="#">NP_001257657</a> , <a href="#">NP_001257658</a> , <a href="#">NP_001257659</a> , <a href="#">NP_001257660</a> , <a href="#">NP_001257661</a> , <a href="#">NP_001257663</a> , <a href="#">NP_001257664</a> , <a href="#">NP_056182</a>
UniProt:	<a href="#">Q9BXK5</a>
Pathways:	<a href="#">Positive Regulation of Endopeptidase Activity</a>

## Application Details

Application Notes:	WB: 1:1000
Restrictions:	For Research Use only

## Handling

Format:	Liquid
Buffer:	Purified polyclonal antibody supplied in PBS with 0.09 % (W/V) sodium azide.
Preservative:	Sodium azide
Precaution of Use:	This product contains Sodium azide: a POISONOUS AND HAZARDOUS SUBSTANCE which should be handled by trained staff only.
Storage:	4 °C,-20 °C
Storage Comment:	Maintain refrigerated at 2-8 °C for up to 6 months. For long term storage store at -20 °C in small aliquots to prevent freeze-thaw cycles.
Expiry Date:	6 months



Western Blotting

**Image 1.** Western blot analysis of anti-BCL2L13 Antibody (Center) (ABIN392361 and ABIN2841998) in CEM cell line lysates (35 µg/lane). BCL2L13(arrow) was detected using the purified Pab.