

Datasheet for ABIN392362

anti-CYP17A1 antibody (AA 358-388)**2** Images[Go to Product page](#)

Overview

Quantity:	400 µL
Target:	CYP17A1
Binding Specificity:	AA 358-388
Reactivity:	Human
Host:	Rabbit
Clonality:	Polyclonal
Conjugate:	This CYP17A1 antibody is un-conjugated
Application:	Western Blotting (WB), Immunofluorescence (IF)

Product Details

Immunogen:	This CYP17A1 antibody is generated from rabbits immunized with a KLH conjugated synthetic peptide between 358-388 amino acids from the Central region of human CYP17A1.
Clone:	RB16932
Isotype:	Ig Fraction
Predicted Reactivity:	Pr
Purification:	This antibody is prepared by Saturated Ammonium Sulfate (SAS) precipitation followed by dialysis against PBS.

Target Details

Target:	CYP17A1
---------	---------

Target Details

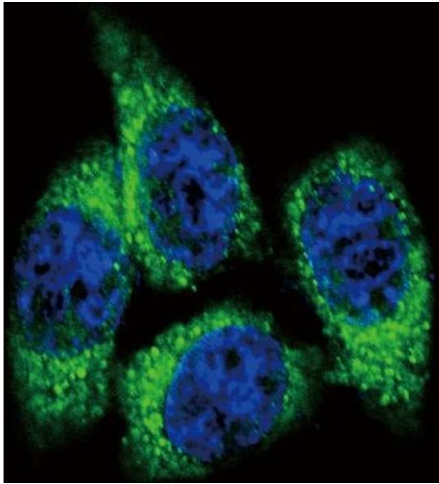
Alternative Name:	CYP17A1 (CYP17A1 Products)
Background:	CYP17A1 is a member of the cytochrome P450 superfamily of enzymes. The cytochrome P450 proteins are monooxygenases which catalyze many reactions involved in drug metabolism and synthesis of cholesterol, steroids and other lipids. This protein localizes to the endoplasmic reticulum. It has both 17alpha-hydroxylase and 17,20-lyase activities and is a key enzyme in the steroidogenic pathway that produces progestins, mineralocorticoids, glucocorticoids, androgens, and estrogens. Mutations in CYP17A1 gene are associated with isolated steroid-17 alpha-hydroxylase deficiency, 17-alpha-hydroxylase/17,20-lyase deficiency, pseudohermaphroditism, and adrenal hyperplasia.
Molecular Weight:	57371
Gene ID:	1586
NCBI Accession:	NP_000093
UniProt:	P05093
Pathways:	Metabolism of Steroid Hormones and Vitamin D , Steroid Hormone Biosynthesis , Regulation of Hormone Metabolic Process , Regulation of Hormone Biosynthetic Process , C21-Steroid Hormone Metabolic Process , Cellular Response to Molecule of Bacterial Origin

Application Details

Application Notes:	IF: 1:10~50. WB: 1:1000
Restrictions:	For Research Use only

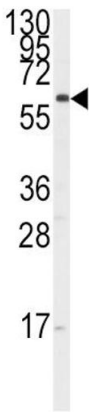
Handling

Format:	Liquid
Buffer:	Purified polyclonal antibody supplied in PBS with 0.09 % (W/V) sodium azide.
Preservative:	Sodium azide
Precaution of Use:	This product contains Sodium azide: a POISONOUS AND HAZARDOUS SUBSTANCE which should be handled by trained staff only.
Storage:	4 °C, -20 °C
Storage Comment:	Maintain refrigerated at 2-8 °C for up to 6 months. For long term storage store at -20 °C in small aliquots to prevent freeze-thaw cycles.



Immunofluorescence

Image 1. Confocal immunofluorescent analysis of CYP17A1 Antibody (Center) (ABIN392362 and ABIN2841999) with Hela cell followed by Alexa Fluor 488-conjugated goat anti-rabbit IgG (green). DAPI was used to stain the cell nuclear (blue).



Western Blotting

Image 2. Western blot analysis of anti-CYP17A1 Antibody (Center) (ABIN392362 and ABIN2841999) in K562 cell line lysates (35 µg/lane). CYP17A1 (arrow) was detected using the purified Pab.