

Datasheet for ABIN392363
anti-CYP21A2 antibody (N-Term)[Go to Product page](#)

1 Image

Overview

Quantity:	400 µL
Target:	CYP21A2
Binding Specificity:	AA 59-87, N-Term
Reactivity:	Human
Host:	Rabbit
Clonality:	Polyclonal
Conjugate:	This CYP21A2 antibody is un-conjugated
Application:	Western Blotting (WB)

Product Details

Immunogen:	This CYP21A2 antibody is generated from rabbits immunized with a KLH conjugated synthetic peptide between 59-87 amino acids from the N-terminal region of human CYP21A2.
Clone:	RB16951
Isotype:	Ig Fraction
Purification:	This antibody is prepared by Saturated Ammonium Sulfate (SAS) precipitation followed by dialysis against PBS.

Target Details

Target:	CYP21A2
Alternative Name:	CYP21A2 (CYP21A2 Products)

Target Details

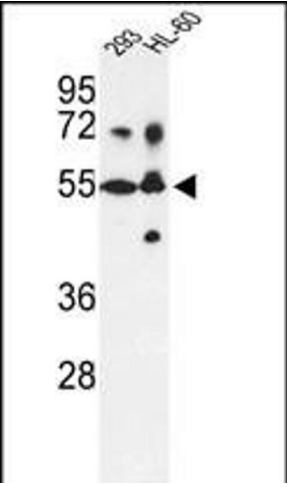
Background:	CYP21A2 is a member of the cytochrome P450 superfamily of enzymes. The cytochrome P450 proteins are monooxygenases which catalyze many reactions involved in drug metabolism and synthesis of cholesterol, steroids and other lipids. This protein localizes to the endoplasmic reticulum and hydroxylates steroids at the 21 position. Its activity is required for the synthesis of steroid hormones including cortisol and aldosterone. Mutations in CYP21A2 gene cause congenital adrenal hyperplasia.
Molecular Weight:	55887
Gene ID:	1589
NCBI Accession:	NP_000491 , NP_001122062
UniProt:	P08686
Pathways:	Metabolism of Steroid Hormones and Vitamin D , Steroid Hormone Biosynthesis , C21-Steroid Hormone Metabolic Process

Application Details

Application Notes:	WB: 1:1000
Restrictions:	For Research Use only

Handling

Format:	Liquid
Buffer:	Purified polyclonal antibody supplied in PBS with 0.09 % (W/V) sodium azide.
Preservative:	Sodium azide
Precaution of Use:	This product contains Sodium azide: a POISONOUS AND HAZARDOUS SUBSTANCE which should be handled by trained staff only.
Storage:	4 °C,-20 °C
Storage Comment:	Maintain refrigerated at 2-8 °C for up to 6 months. For long term storage store at -20 °C in small aliquots to prevent freeze-thaw cycles.
Expiry Date:	6 months



Western Blotting

Image 1. Western blot analysis of CYP21A2 Antibody (N-term) (ABIN392363 and ABIN2842000) in 293, HL-60 cell line lysates (35 µg/lane). CYP21A2 (arrow) was detected using the purified Pab.