

Datasheet for ABIN392376
anti-CYP1B1 antibody (AA 143-176)[Go to Product page](#)

1 Image

Overview

Quantity:	400 µL
Target:	CYP1B1
Binding Specificity:	AA 143-176
Reactivity:	Human
Host:	Rabbit
Clonality:	Polyclonal
Conjugate:	This CYP1B1 antibody is un-conjugated
Application:	Western Blotting (WB)

Product Details

Immunogen:	This CYP1B1 antibody is generated from rabbits immunized with a KLH conjugated synthetic peptide between 143-176 amino acids from the Central region of human CYP1B1.
Clone:	RB16944
Isotype:	Ig Fraction
Purification:	This antibody is prepared by Saturated Ammonium Sulfate (SAS) precipitation followed by dialysis against PBS.

Target Details

Target:	CYP1B1
Alternative Name:	CYP1B1 (CYP1B1 Products)

Target Details

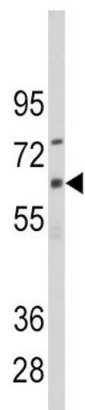
Background:	CYP1B1 is a member of the cytochrome P450 superfamily of enzymes. The cytochrome P450 proteins are monooxygenases which catalyze many reactions involved in drug metabolism and synthesis of cholesterol, steroids and other lipids. The enzyme localizes to the endoplasmic reticulum and metabolizes procarcinogens such as polycyclic aromatic hydrocarbons and 17beta-estradiol. Mutations in CYP1B1 gene have been associated with primary congenital glaucoma, therefore it is thought that the enzyme also metabolizes a signaling molecule involved in eye development, possibly a steroid.
Molecular Weight:	60846
Gene ID:	1545
NCBI Accession:	NP_000095
UniProt:	Q16678
Pathways:	Steroid Hormone Biosynthesis

Application Details

Application Notes:	WB: 1:1000
Restrictions:	For Research Use only

Handling

Format:	Liquid
Buffer:	Purified polyclonal antibody supplied in PBS with 0.09 % (W/V) sodium azide.
Preservative:	Sodium azide
Precaution of Use:	This product contains Sodium azide: a POISONOUS AND HAZARDOUS SUBSTANCE which should be handled by trained staff only.
Storage:	4 °C,-20 °C
Storage Comment:	Maintain refrigerated at 2-8 °C for up to 6 months. For long term storage store at -20 °C in small aliquots to prevent freeze-thaw cycles.
Expiry Date:	6 months



Western Blotting

Image 1. Western blot analysis of anti-CYP1B1 Antibody (Center) (ABIN392376 and ABIN2842009) in CEM cell line lysates (35 µg/lane). CYP1B1 (arrow) was detected using the purified Pab.