

Datasheet for ABIN392380
anti-CYP2R1 antibody (AA 152-180)[Go to Product page](#)

2 Images

1 Publication

Overview

Quantity:	400 µL
Target:	CYP2R1
Binding Specificity:	AA 152-180
Reactivity:	Human, Mouse
Host:	Rabbit
Clonality:	Polyclonal
Conjugate:	This CYP2R1 antibody is un-conjugated
Application:	Western Blotting (WB), Immunohistochemistry (Paraffin-embedded Sections) (IHC (p))

Product Details

Immunogen:	This CYP2R1 antibody is generated from rabbits immunized with a KLH conjugated synthetic peptide between 152-180 amino acids from the Central region of human CYP2R1.
Clone:	RB15785
Isotype:	Ig Fraction
Purification:	This antibody is prepared by Saturated Ammonium Sulfate (SAS) precipitation followed by dialysis against PBS.

Target Details

Target:	CYP2R1
Alternative Name:	CYP2R1 (CYP2R1 Products)

Target Details

Background:	CYP2R1 is a member of the cytochrome P450 superfamily of enzymes. The cytochrome P450 proteins are monooxygenases which catalyze many reactions involved in drug metabolism and synthesis of cholesterol, steroids and other lipids. This enzyme is a microsomal vitamin D hydroxylase that converts vitamin D into the active ligand for the vitamin D receptor. A mutation in CYP2R1 gene has been associated with selective 25-hydroxyvitamin D deficiency.
Molecular Weight:	57359
Gene ID:	120227
NCBI Accession:	NP_078790
UniProt:	Q6VWX0
Pathways:	Metabolism of Steroid Hormones and Vitamin D

Application Details

Application Notes:	WB: 1:1000. IHC-P: 1:10~50
Restrictions:	For Research Use only

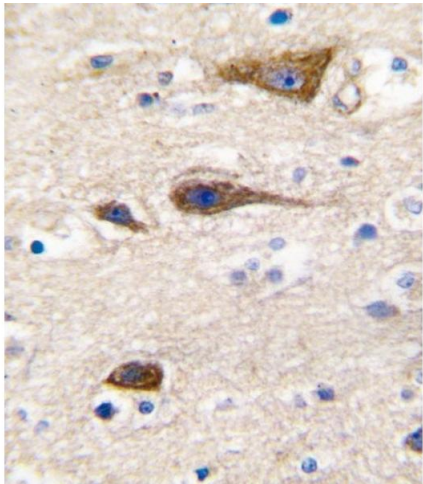
Handling

Format:	Liquid
Buffer:	Purified polyclonal antibody supplied in PBS with 0.09 % (W/V) sodium azide.
Preservative:	Sodium azide
Precaution of Use:	This product contains Sodium azide: a POISONOUS AND HAZARDOUS SUBSTANCE which should be handled by trained staff only.
Storage:	4 °C, -20 °C
Storage Comment:	Maintain refrigerated at 2-8 °C for up to 6 months. For long term storage store at -20 °C in small aliquots to prevent freeze-thaw cycles.
Expiry Date:	6 months

Publications

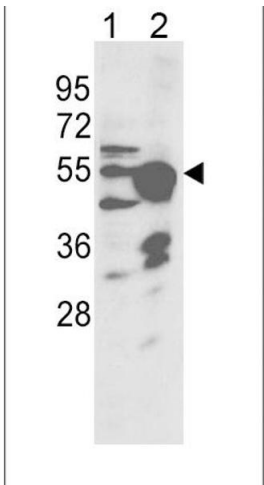
Product cited in:	Nasr, Mukhopadhyay, Zhang, Katzenstein: "Immunohistochemical markers in diagnosis of papillary thyroid carcinoma: Utility of HBME1 combined with CK19 immunostaining." in: Modern pathology : an official journal of the United States and Canadian Academy of Pathology, Inc,
-------------------	---

Images



Immunohistochemistry (Paraffin-embedded Sections)

Image 1. Formalin-fixed and paraffin-embedded human brain tissue reacted with CYP2R1 antibody (Center), which was peroxidase-conjugated to the secondary antibody, followed by DAB staining. This data demonstrates the use of this antibody for immunohistochemistry, clinical relevance has not been evaluated.



Western Blotting

Image 2. Western blot analysis of CYP2R1 Antibody (Center) (ABIN392380 and ABIN2842012) in NCI- cell line(lane 1) and mouse liver tissue(lane 2) lysates (35 μ g/lane). CYP2R1 (arrow) was detected using the purified Pab.