

Datasheet for ABIN392382  
**anti-CYP4F12 antibody (C-Term)**[Go to Product page](#)

## 1 Image

## Overview

Quantity:	400 µL
Target:	CYP4F12
Binding Specificity:	AA 473-503, C-Term
Reactivity:	Human
Host:	Rabbit
Clonality:	Polyclonal
Conjugate:	This CYP4F12 antibody is un-conjugated
Application:	Western Blotting (WB)

## Product Details

Immunogen:	This CYP4F12 antibody is generated from rabbits immunized with a KLH conjugated synthetic peptide between 473-503 amino acids from the C-terminal region of human CYP4F12.
Clone:	RB17058
Isotype:	Ig Fraction
Purification:	This antibody is prepared by Saturated Ammonium Sulfate (SAS) precipitation followed by dialysis against PBS.

## Target Details

Target:	CYP4F12
Alternative Name:	CYP4F12 ( <a href="#">CYP4F12 Products</a> )

## Target Details

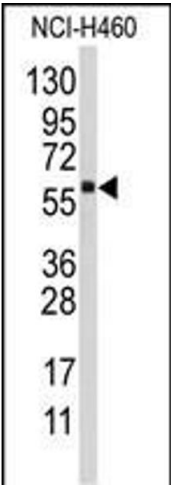
Background:	CYP4F12 is a member of the cytochrome P450 superfamily of enzymes. The cytochrome P450 proteins are monooxygenases which catalyze many reactions involved in drug metabolism and synthesis of cholesterol, steroids and other lipids. This protein likely localizes to the endoplasmic reticulum.
Molecular Weight:	60309
Gene ID:	66002
NCBI Accession:	<a href="#">NP_076433</a>
UniProt:	<a href="#">Q9HCS2</a>
Pathways:	<a href="#">Monocarboxylic Acid Catabolic Process</a>

## Application Details

Application Notes:	WB: 1:1000
Restrictions:	For Research Use only

## Handling

Format:	Liquid
Buffer:	Purified polyclonal antibody supplied in PBS with 0.09 % (W/V) sodium azide.
Preservative:	Sodium azide
Precaution of Use:	This product contains Sodium azide: a POISONOUS AND HAZARDOUS SUBSTANCE which should be handled by trained staff only.
Storage:	4 °C,-20 °C
Storage Comment:	Maintain refrigerated at 2-8 °C for up to 6 months. For long term storage store at -20 °C in small aliquots to prevent freeze-thaw cycles.
Expiry Date:	6 months



Western Blotting

**Image 1.** Western blot analysis of anti-CYP4F12 Antibody (C-term) (ABIN392382 and ABIN2842013) in NCI- cell line lysates (35 µg/lane). CYP4F12(arrow) was detected using the purified Pab.