

Datasheet for ABIN392391
anti-GCK antibody (C-Term)

3 Images

[Go to Product page](#)

Overview

Quantity:	400 µL
Target:	GCK
Binding Specificity:	AA 403-433, C-Term
Reactivity:	Human
Host:	Rabbit
Clonality:	Polyclonal
Conjugate:	This GCK antibody is un-conjugated
Application:	Western Blotting (WB), Immunohistochemistry (Paraffin-embedded Sections) (IHC (p))

Product Details

Immunogen:	This GCK antibody is generated from rabbits immunized with a KLH conjugated synthetic peptide between 403-433 amino acids from the C-terminal region of human GCK.
Clone:	RB05339
Isotype:	Ig Fraction
Purification:	This antibody is prepared by Saturated Ammonium Sulfate (SAS) precipitation followed by dialysis against PBS.

Target Details

Target:	GCK
Alternative Name:	GCK (GCK Products)

Target Details

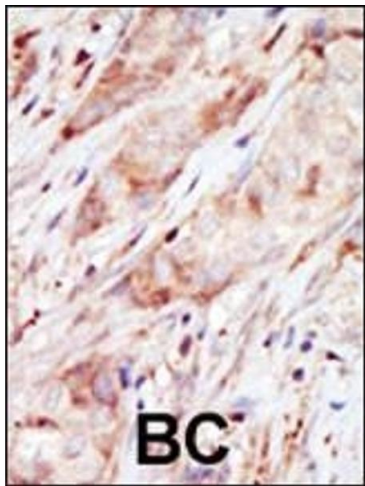
Background:	Hexokinases phosphorylate glucose to produce glucose-6-phosphate, thus committing glucose to the glycolytic pathway. Alternative splicing of the gene for GCK results in three tissue-specific forms of glucokinase, one found in pancreatic islet beta cells and two found in liver. The protein localizes to the outer membrane of mitochondria. In contrast to other forms of hexokinase, this enzyme is not inhibited by its product glucose-6-phosphate but remains active while glucose is abundant. Mutations in the gene have been associated with non-insulin dependent diabetes mellitus (NIDDM), also called maturity onset diabetes of the young, type 2 (MODY2), mutations have also been associated with persistent hyperinsulinemic hypoglycemia of infancy (PHHI).
Molecular Weight:	52191
Gene ID:	2645
NCBI Accession:	NP_000153 , NP_277042 , NP_277043
UniProt:	P35557
Pathways:	MAPK Signaling , Positive Regulation of Peptide Hormone Secretion , Carbohydrate Homeostasis , Cellular Glucan Metabolic Process , Regulation of Carbohydrate Metabolic Process

Application Details

Application Notes:	WB: 1:1000. WB: 1:1000. IHC-P: 1:50~100
Restrictions:	For Research Use only

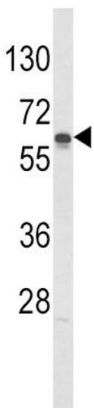
Handling

Format:	Liquid
Buffer:	Purified polyclonal antibody supplied in PBS with 0.09 % (W/V) sodium azide.
Preservative:	Sodium azide
Precaution of Use:	This product contains Sodium azide: a POISONOUS AND HAZARDOUS SUBSTANCE which should be handled by trained staff only.
Storage:	4 °C,-20 °C
Storage Comment:	Maintain refrigerated at 2-8 °C for up to 6 months. For long term storage store at -20 °C in small aliquots to prevent freeze-thaw cycles.
Expiry Date:	6 months



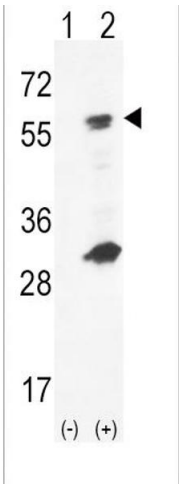
Immunohistochemistry (Paraffin-embedded Sections)

Image 1. Formalin-fixed and paraffin-embedded human cancer tissue reacted with the primary antibody, which was peroxidase-conjugated to the secondary antibody, followed by AEC staining. This data demonstrates the use of this antibody for immunohistochemistry, clinical relevance has not been evaluated. BC = breast carcinoma, HC = hepatocarcinoma.



Western Blotting

Image 2. Western blot analysis of hGCK- (ABIN392391 and ABIN2842019) in Jurkat cell line lysates (35 µg/lane). GCK (arrow) was detected using the purified Pab.



Western Blotting

Image 3. Western blot analysis of GCK (arrow) using rabbit polyclonal hGCK- (ABIN392391 and ABIN2842019). 293 cell lysates (2 µg/lane) either nontransfected (Lane 1) or transiently transfected (Lane 2) with the GCK gene.