

Datasheet for ABIN392403  
**anti-MAP3K1 antibody (C-Term)**

## 2 Images

[Go to Product page](#)

## Overview

Quantity:	400 µL
Target:	MAP3K1
Binding Specificity:	AA 1145-1176, C-Term
Reactivity:	Human
Host:	Rabbit
Clonality:	Polyclonal
Conjugate:	This MAP3K1 antibody is un-conjugated
Application:	Western Blotting (WB), Immunohistochemistry (Paraffin-embedded Sections) (IHC (p))

## Product Details

Immunogen:	This MEKK1 antibody is generated from rabbits immunized with a KLH conjugated synthetic peptide between 1145-1176 amino acids from the C-terminal region of human MEKK1.
Clone:	RB00999
Isotype:	Ig Fraction
Predicted Reactivity:	M
Purification:	This antibody is prepared by Saturated Ammonium Sulfate (SAS) precipitation followed by dialysis against PBS.

## Target Details

Target:	MAP3K1
---------	--------

## Target Details

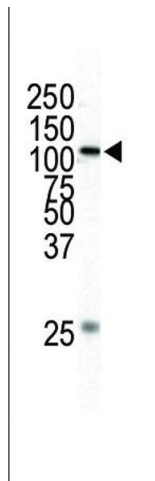
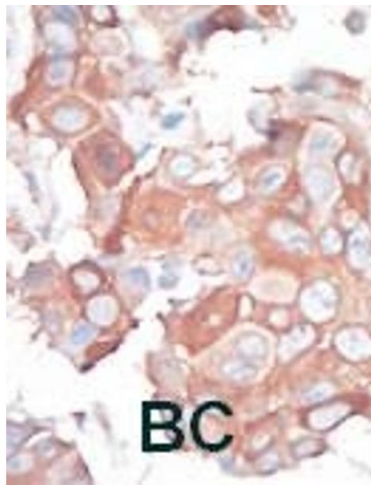
Alternative Name:	MEKK1 ( <a href="#">MAP3K1 Products</a> )
Background:	Mitogen-activated protein kinase (MAPK) signaling cascades include MAPK or extracellular signal-regulated kinase (ERK), MAPK kinase (MKK or MEK), and MAPK kinase kinase (MAPKKK or MEKK). MAPKK kinase/MEKK phosphorylates and activates its downstream protein kinase, MAPK kinase/MEK, which in turn activates MAPK. The kinases of these signaling cascades are highly conserved, and homologs exist in yeast, Drosophila, and mammalian cells. MEKK1 can phosphorylate and activate MAPKK 1 and MAPKK 2 (MEK1/MEK2) which leads to phosphorylation of MAP kinases. It is also a highly efficient activator of the JNK cascade. The protein contains a putative 1 RING-type zinc finger and 1 SWIM-type zinc finger.
Molecular Weight:	164470
Gene ID:	4214
NCBI Accession:	<a href="#">NP_005912</a>
UniProt:	<a href="#">Q13233</a>
Pathways:	<a href="#">MAPK Signaling</a> , <a href="#">Interferon-gamma Pathway</a> , <a href="#">Caspase Cascade in Apoptosis</a> , <a href="#">TLR Signaling</a> , <a href="#">Fc-epsilon Receptor Signaling Pathway</a> , <a href="#">Activation of Innate immune Response</a> , <a href="#">Regulation of Actin Filament Polymerization</a> , <a href="#">Toll-Like Receptors Cascades</a>

## Application Details

Application Notes:	WB: 1:1000. IHC-P: 1:50~100
Restrictions:	For Research Use only

## Handling

Format:	Liquid
Buffer:	Purified polyclonal antibody supplied in PBS with 0.09 % (W/V) sodium azide.
Preservative:	Sodium azide
Precaution of Use:	This product contains Sodium azide: a POISONOUS AND HAZARDOUS SUBSTANCE which should be handled by trained staff only.
Storage:	4 °C, -20 °C
Storage Comment:	Maintain refrigerated at 2-8 °C for up to 6 months. For long term storage store at -20 °C in small aliquots to prevent freeze-thaw cycles.



#### Immunohistochemistry (Paraffin-embedded Sections)

**Image 1.** Formalin-fixed and paraffin-embedded human cancer tissue reacted with the primary antibody, which was peroxidase-conjugated to the secondary antibody, followed by AEC staining. This data demonstrates the use of this antibody for immunohistochemistry, clinical relevance has not been evaluated. BC = breast carcinoma, HC = hepatocarcinoma.

#### Western Blotting

**Image 2.** Western blot analysis of anti-MEKK1 Pab (ABIN392403 and ABIN2842022) in HL-60 cell lysate. MEKK1 (Arrow) was detected using purified Pab. Secondary HRP-anti-rabbit was used for signal visualization with chemiluminescence.