

Datasheet for ABIN392424
anti-MAP3K10 antibody (C-Term)[2 Images](#)[2 Publications](#)[Go to Product page](#)

Overview

Quantity:	400 µL
Target:	MAP3K10
Binding Specificity:	AA 628-659, C-Term
Reactivity:	Human
Host:	Rabbit
Clonality:	Polyclonal
Conjugate:	This MAP3K10 antibody is un-conjugated
Application:	Western Blotting (WB), Immunohistochemistry (Paraffin-embedded Sections) (IHC (p))

Product Details

Immunogen:	This MLK2 antibody is generated from rabbits immunized with a KLH conjugated synthetic peptide between 628-659 amino acids from the C-terminal region of human MLK2.
Clone:	RB0986
Isotype:	Ig Fraction
Purification:	This antibody is prepared by Saturated Ammonium Sulfate (SAS) precipitation followed by dialysis against PBS.

Target Details

Target:	MAP3K10
Alternative Name:	MLK2 (MAP3K10 Products)

Target Details

Background: MLK2 is a member of the serine/threonine kinase family. This kinase has been shown to activate MAPK8/JNK and MKK4/SEK1, and this kinase itself can be phosphorylated, and thus activated by JNK kinases. This kinase functions preferentially on the JNK signaling pathway, and is reported to be involved in nerve growth factor (NGF) induced neuronal apoptosis.

Molecular Weight: 103694

Gene ID: 4294

NCBI Accession: [NP_002437](#)

UniProt: [Q02779](#)

Application Details

Application Notes: WB: 1:1000. IHC-P: 1:50~100

Restrictions: For Research Use only

Handling

Format: Liquid

Buffer: Purified polyclonal antibody supplied in PBS with 0.09 % (W/V) sodium azide.

Preservative: Sodium azide

Precaution of Use: This product contains Sodium azide: a POISONOUS AND HAZARDOUS SUBSTANCE which should be handled by trained staff only.

Storage: 4 °C, -20 °C

Storage Comment: Maintain refrigerated at 2-8 °C for up to 6 months. For long term storage store at -20 °C in small aliquots to prevent freeze-thaw cycles.

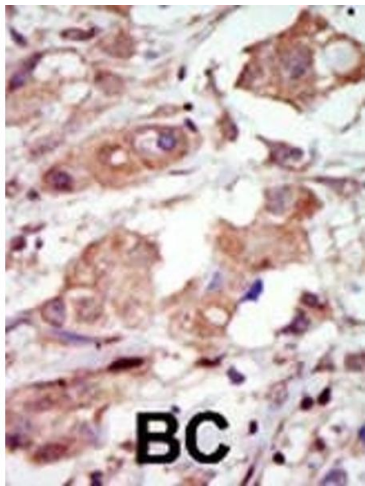
Expiry Date: 6 months

Publications

Product cited in: Humphrey, Newcomb, Yu, Hao, Yu, Krajewski, Du, Jhala: "Mixed lineage kinase-3 stabilizes and functionally cooperates with TRIBBLES-3 to compromise mitochondrial integrity in cytokine-induced death of pancreatic beta cells." in: **The Journal of biological chemistry**, Vol. 285, Issue 29, pp. 22426-36, (2010) ([PubMed](#)).

Nagao, Hayashi: "Mixed lineage kinase 2 and hippocampin are localized in Lewy bodies of

Parkinson's disease." in: **Journal of the neurological sciences**, Vol. 281, Issue 1-2, pp. 51-4, (2009) ([PubMed](#)).



Immunohistochemistry (Paraffin-embedded Sections)

Image 1. Formalin-fixed and paraffin-embedded human cancer tissue reacted with the primary antibody, which was peroxidase-conjugated to the secondary antibody, followed by DAB staining. This data demonstrates the use of this antibody for immunohistochemistry, clinical relevance has not been evaluated. BC = breast carcinoma, HC = hepatocarcinoma.



Western Blotting

Image 2. The anti-MLK2 Pab (ABIN392424 and ABIN2842029) is used in Western blot to detect MLK2 in transfected COS7 cell lysate. Data is kindly provided by Drs. M.K. Barthwal and A. Rana from Texas A&M University, Health Science Center (Temple, TX).