

Datasheet for ABIN392435
anti-PAK3 antibody (AA 218-247)[Go to Product page](#)

2 Images

Overview

Quantity:	400 µL
Target:	PAK3
Binding Specificity:	AA 218-247
Reactivity:	Human
Host:	Rabbit
Clonality:	Polyclonal
Conjugate:	This PAK3 antibody is un-conjugated
Application:	Western Blotting (WB), Immunohistochemistry (Paraffin-embedded Sections) (IHC (p))

Product Details

Immunogen:	This PAK3 antibody is generated from rabbits immunized with a KLH conjugated synthetic peptide between 218-247 amino acids from the Central region of human PAK3.
Clone:	RB1223-1224
Isotype:	Ig Fraction
Purification:	This antibody is prepared by Saturated Ammonium Sulfate (SAS) precipitation followed by dialysis against PBS.

Target Details

Target:	PAK3
Alternative Name:	PAK3 (PAK3 Products)

Target Details

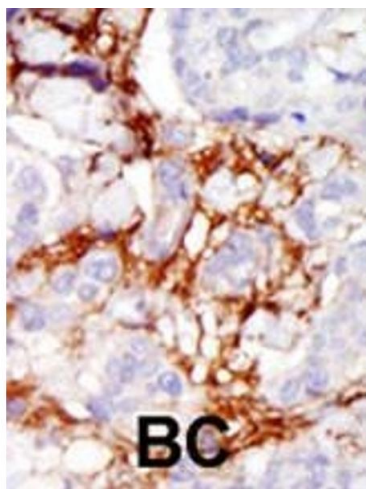
Background:	PAK3, a member of the STE20 subfamily of Ser/Thr protein kinases, acts on a variety of targets. PAK3 interacts tightly with GTP-bound but not GDP-bound CDC42/p21 and RAC1. It shows highly specific binding to the SH3 domains of phospholipase C-gamma and of adapter protein NCK. This protein is highly expressed in postmitotic neurons of the developing and postnatal cerebral cortex and hippocampus. PAK3 is autophosphorylated when activated by CDC42/p21. Defects in PAK3 are the cause of non-specific X-linked nonsyndromic mental retardation type 30 (MRX30). The protein structure contains 1 CRIB domain.
Molecular Weight:	62310
Gene ID:	5063
NCBI Accession:	NP_001121638 , NP_001121639 , NP_001121640 , NP_001121644 , NP_001121645 , NP_002569
UniProt:	O75914

Application Details

Application Notes:	WB: 1:1000. IHC-P: 1:50~100
Restrictions:	For Research Use only

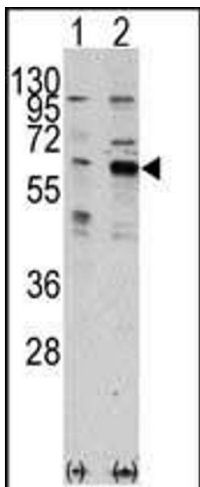
Handling

Format:	Liquid
Buffer:	Purified polyclonal antibody supplied in PBS with 0.09 % (W/V) sodium azide.
Preservative:	Sodium azide
Precaution of Use:	This product contains Sodium azide: a POISONOUS AND HAZARDOUS SUBSTANCE which should be handled by trained staff only.
Storage:	4 °C,-20 °C
Storage Comment:	Maintain refrigerated at 2-8 °C for up to 6 months. For long term storage store at -20 °C in small aliquots to prevent freeze-thaw cycles.
Expiry Date:	6 months



Immunohistochemistry (Paraffin-embedded Sections)

Image 1. Formalin-fixed and paraffin-embedded human cancer tissue reacted with the primary antibody, which was peroxidase-conjugated to the secondary antibody, followed by AEC staining. This data demonstrates the use of this antibody for immunohistochemistry, clinical relevance has not been evaluated. BC = breast carcinoma, HC = hepatocarcinoma.



Western Blotting

Image 2. Western blot analysis of K3(arrow) using rabbit polyclonal K3 Antibody (ABIN392435 and ABIN2842034). 293 cell lysates (2 µg/lane) either nontransfected (Lane 1) or transiently transfected with the K3 gene (Lane 2) (Origene Technologies).