

Datasheet for ABIN392438
anti-PAK7 antibody (AA 168-198)[Go to Product page](#)

4 Images

Overview

Quantity:	400 µL
Target:	PAK7
Binding Specificity:	AA 168-198
Reactivity:	Human
Host:	Rabbit
Clonality:	Polyclonal
Conjugate:	This PAK7 antibody is un-conjugated
Application:	Western Blotting (WB), Immunohistochemistry (Paraffin-embedded Sections) (IHC (p))

Product Details

Immunogen:	This PAK5 antibody is generated from rabbits immunized with a KLH conjugated synthetic peptide between 168-198 amino acids from human PAK5.
Clone:	RB1235
Isotype:	Ig Fraction
Purification:	This antibody is purified through a protein A column, followed by peptide affinity purification.

Target Details

Target:	PAK7
Alternative Name:	PAK5 (PAK7 Products)
Background:	PAK5 is a member of the PAK family of Ser/Thr protein kinases. PAK family members are

Target Details

known to be effectors of Rac/Cdc42 GTPases, which have been implicated in the regulation of cytoskeletal dynamics, proliferation, and cell survival signaling. This kinase contains a CDC42/Rac1 interactive binding (CRIB) motif, and has been shown to bind CDC42 in the presence of GTP. This kinase is predominantly expressed in brain. It is capable of promoting neurite outgrowth, and thus may play a role in neurite development. This kinase is associated with microtubule networks and induces microtubule stabilization. The subcellular localization of this kinase is tightly regulated during cell cycle progression.

Molecular Weight: 80745

Gene ID: 57144

NCBI Accession: [NP_065074](#), [NP_817127](#)

UniProt: [Q9P286](#)

Application Details

Application Notes: WB: 1:1000. WB: 1:1000. WB: 1:2000. IHC-P: 1:100

Restrictions: For Research Use only

Handling

Format: Liquid

Buffer: Purified polyclonal antibody supplied in PBS with 0.09 % (W/V) sodium azide.

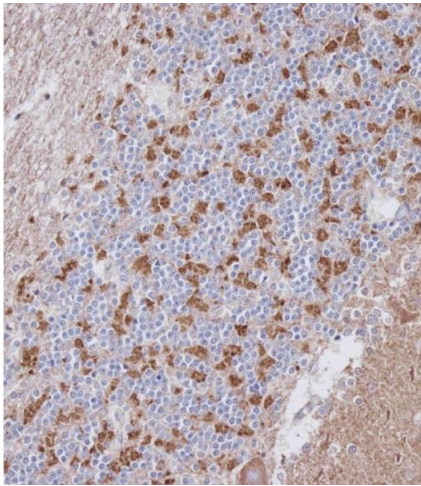
Preservative: Sodium azide

Precaution of Use: This product contains Sodium azide: a POISONOUS AND HAZARDOUS SUBSTANCE which should be handled by trained staff only.

Storage: 4 °C, -20 °C

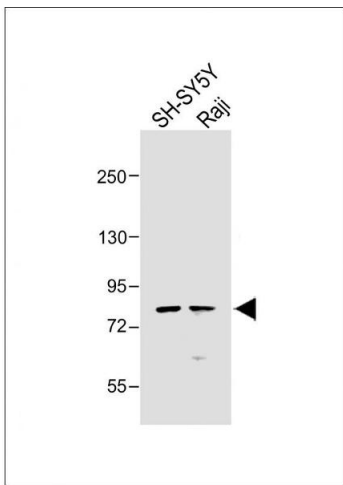
Storage Comment: Maintain refrigerated at 2-8 °C for up to 6 months. For long term storage store at -20 °C in small aliquots to prevent freeze-thaw cycles.

Expiry Date: 6 months



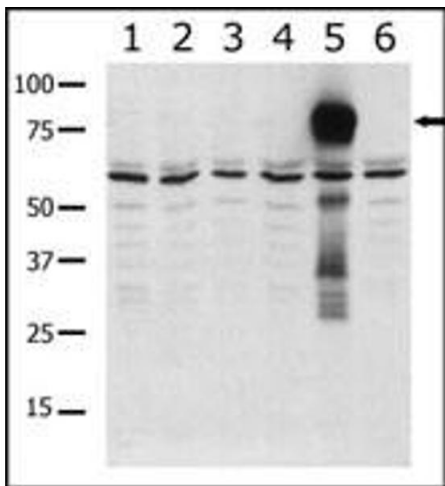
Immunohistochemistry (Paraffin-embedded Sections)

Image 1. Immunohistochemical analysis of A on paraffin-embedded Human cerebellum tissue. Tissue was fixed with formaldehyde at room temperature. Heat induced epitope retrieval was performed by EDTA buffer (pH 9. 0). Samples were incubated with primary Antibody (1:100) for 1 hour at room temperature. Undiluted CRF Anti-Polyvalent HRP Polymer antibody was used as the secondary antibody.



Western Blotting

Image 2. All lanes : Anti-K5 Antibody at 1:1000 dilution Lane 1: SH-SY5Y whole cell lysate Lane 2: Raji whole cell lysate Lysates/proteins at 20 µg per lane. Secondary Goat Anti-Rabbit IgG, (H+L), Peroxidase conjugated at 1/10000 dilution. Predicted band size : 81 kDa Blocking/Dilution buffer: 5 % NFDM/TBST.



Western Blotting

Image 3. Western blot analysis of anti-K5 b (ABIN392438 and ABIN2842036) in lysates from transiently transfected COS7 cells. Lane 1: negative control, Lane 2: K1-expressing cells, Lane 3: K2-expressing cells, Lane 4: K4-expressing cells, Lane 5: K5-expressing cells, and Lane 6: K6-expressing cells. K5 (arrow) was detected using purified b. Data is kindly provided by Drs. Z.M. Jaffer and J. Chernoff from the Fox Chase Cancer Center (Philadelphia,).

Please check the [product details page](#) for more images. Overall 4 images are available for ABIN392438.