

Datasheet for ABIN392439  
**anti-PAK6 antibody (AA 116-146)**[Go to Product page](#)

## 1 Image

## Overview

Quantity:	400 µL
Target:	PAK6
Binding Specificity:	AA 116-146
Reactivity:	Human
Host:	Rabbit
Clonality:	Polyclonal
Conjugate:	This PAK6 antibody is un-conjugated
Application:	Western Blotting (WB)

## Product Details

Immunogen:	This PAK6 antibody is generated from rabbits immunized with a KLH conjugated synthetic peptide between 116-146 amino acids from human PAK6.
Clone:	RB1237
Isotype:	Ig Fraction
Purification:	This antibody is prepared by Saturated Ammonium Sulfate (SAS) precipitation followed by dialysis against PBS.

## Target Details

Target:	PAK6
Alternative Name:	PAK6 ( <a href="#">PAK6 Products</a> )

## Target Details

**Background:** The PAK6 protein shares a high degree of sequence similarity with p21-activated kinase (PAK) family members. The proteins of this family are Rac/Cdc42-associated Ste20-like Ser/Thr protein kinases, characterized by a highly conserved amino-terminal Cdc42/Rac interactive binding (CRIB) domain and a carboxyl-terminal kinase domain. PAK kinases are implicated in the regulation of a number of cellular processes, including cytoskeleton rearrangement, apoptosis and the MAP kinase signaling pathway. PAK6 was found to interact with androgen receptor (AR), which is a steroid hormone-dependent transcription factor that is important for male sexual differentiation and development. The p21-activated protein kinase 6 gene was found to be highly expressed in testis and prostate tissues and the encoded protein was shown to cotranslocate into the nucleus with AR in response to androgen.

**Molecular Weight:** 74869

**Gene ID:** 56924

**NCBI Accession:** [NP\\_001122100](#), [NP\\_001122101](#), [NP\\_001263646](#), [NP\\_001263647](#), [NP\\_064553](#)

**UniProt:** [Q9NQU5](#)

## Application Details

**Application Notes:** WB: 1:1000

**Restrictions:** For Research Use only

## Handling

**Format:** Liquid

**Buffer:** Purified polyclonal antibody supplied in PBS with 0.09 % (W/V) sodium azide.

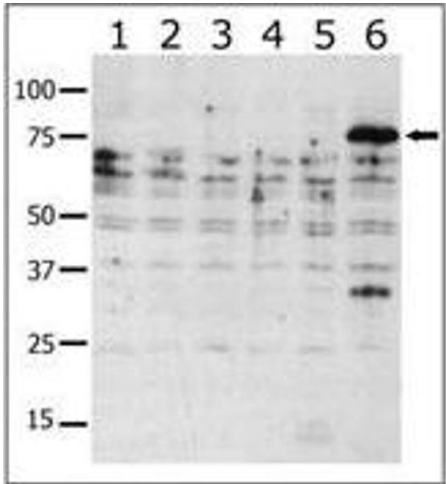
**Preservative:** Sodium azide

**Precaution of Use:** This product contains Sodium azide: a POISONOUS AND HAZARDOUS SUBSTANCE which should be handled by trained staff only.

**Storage:** 4 °C, -20 °C

**Storage Comment:** Maintain refrigerated at 2-8 °C for up to 6 months. For long term storage store at -20 °C in small aliquots to prevent freeze-thaw cycles.

**Expiry Date:** 6 months



Western Blotting

**Image 1.** Western blot analysis of anti-K6 b (ABIN392439 and ABIN2842037) in lysates from transiently transfected COS7 cells. Lane 1: negative control, Lane 2: K1-expressing cells, Lane 3: K2-expressing cells, Lane 4: K4-expressing cells, Lane 5: K5-expressing cells, and Lane 6: K6-expressing cells. K6 (arrow) was detected using purified b. Data is kindly provided by Drs. Z.M. Jaffer and J. Chernoff from the Fox Chase Cancer Center (Philadelphia, ).