

Datasheet for ABIN392452

anti-RPS6KA1 antibody (AA 710-735)[Go to Product page](#)**2** Images

Overview

Quantity:	400 µL
Target:	RPS6KA1
Binding Specificity:	AA 710-735
Reactivity:	Human
Host:	Rabbit
Clonality:	Polyclonal
Conjugate:	This RPS6KA1 antibody is un-conjugated
Application:	Western Blotting (WB), Immunohistochemistry (Paraffin-embedded Sections) (IHC (p))

Product Details

Immunogen:	This RPS6KA1 antibody is generated from rabbits immunized with a KLH conjugated synthetic peptide between 710-735 amino acids from human RPS6KA1.
Clone:	RB13297
Isotype:	Ig Fraction
Predicted Reactivity:	M, Rat
Purification:	This antibody is purified through a protein A column, followed by peptide affinity purification.

Target Details

Target:	RPS6KA1
Alternative Name:	RPS6KA1 (RPS6KA1 Products)

Target Details

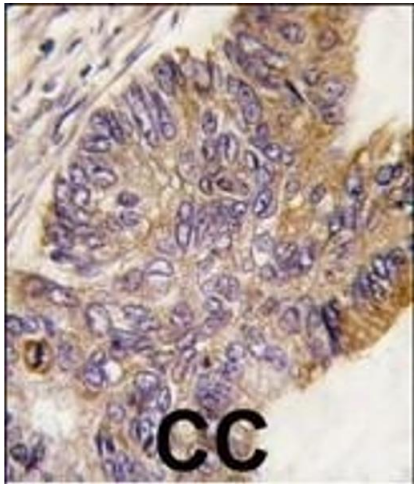
Background:	RPS6KA1 is a member of the RSK (ribosomal S6 kinase) family of serine/threonine kinases. This kinase contains 2 nonidentical kinase catalytic domains and phosphorylates various substrates, including members of the mitogen-activated kinase (MAPK) signalling pathway. The activity of this protein has been implicated in controlling cell growth and differentiation.
Molecular Weight:	82723
Gene ID:	6195
NCBI Accession:	NP_001006666 , NP_002944
UniProt:	Q15418
Pathways:	MAPK Signaling , Neurotrophin Signaling Pathway , Activation of Innate immune Response , Toll-Like Receptors Cascades

Application Details

Application Notes:	WB: 1:1000. IHC-P: 1:10~50
Restrictions:	For Research Use only

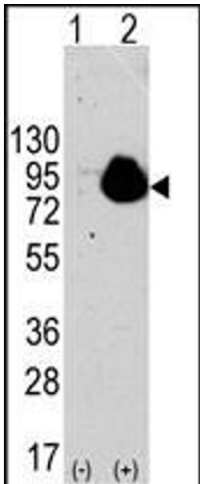
Handling

Format:	Liquid
Buffer:	Purified polyclonal antibody supplied in PBS with 0.09 % (W/V) sodium azide.
Preservative:	Sodium azide
Precaution of Use:	This product contains Sodium azide: a POISONOUS AND HAZARDOUS SUBSTANCE which should be handled by trained staff only.
Storage:	4 °C,-20 °C
Storage Comment:	Maintain refrigerated at 2-8 °C for up to 6 months. For long term storage store at -20 °C in small aliquots to prevent freeze-thaw cycles.
Expiry Date:	6 months



Immunohistochemistry (Paraffin-embedded Sections)

Image 1. Formalin-fixed and paraffin-embedded human colon carcinoma tissue reacted with RPS6KA1 Antibody , which was peroxidase-conjugated to the secondary antibody, followed by DAB staining. This data demonstrates the use of this antibody for immunohistochemistry, clinical relevance has not been evaluated.



Western Blotting

Image 2. Western blot analysis of RPS6KA1 (arrow) using rabbit polyclonal RPS6KA1 Antibody . 293 cell lysates (2 μ g/lane) either nontransfected (Lane 1) or transiently transfected with the RPS6KA1 gene (Lane 2) (Origene Technologies).