

Datasheet for ABIN392472

## anti-MAP3K8 antibody (C-Term)

3 Images



[Go to Product page](#)

### Overview

Quantity:	400 µL
Target:	MAP3K8
Binding Specificity:	AA 368-397, C-Term
Reactivity:	Human
Host:	Rabbit
Clonality:	Polyclonal
Conjugate:	This MAP3K8 antibody is un-conjugated
Application:	Western Blotting (WB), Immunohistochemistry (Paraffin-embedded Sections) (IHC (p))

### Product Details

Immunogen:	This COT (MAP3K8/MEKK8) antibody is generated from rabbits immunized with a KLH conjugated synthetic peptide between 368-397 amino acids from the C-terminal region of human COT (MAP3K8/MEKK8).
Clone:	RB03467
Isotype:	Ig Fraction
Predicted Reactivity:	M, Rat
Purification:	This antibody is prepared by Saturated Ammonium Sulfate (SAS) precipitation followed by dialysis against PBS.

### Target Details

Target:	MAP3K8
---------	--------

## Target Details

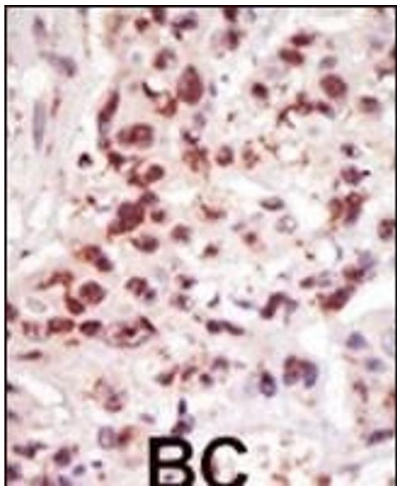
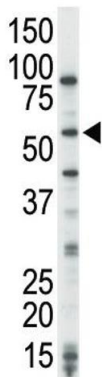
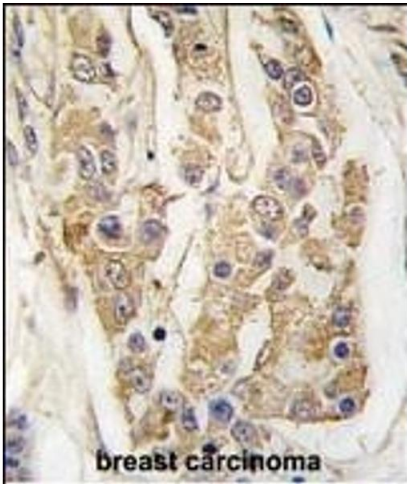
Alternative Name:	COT (MAP3K8/MEKK8) ( <a href="#">MAP3K8 Products</a> )
Background:	COT, a member of the MAPKKK subfamily of Ser/Thr protein kinases, is able to activate NF-kappa-B 1 by stimulating proteasome-mediated proteolysis of NF-kappa-B 1/p105. It plays a role in the cell cycle. The longer form of cot has some transforming activity, although it is much weaker than the activated cot oncoprotein. This cytoplasmic protein is expressed in several normal tissues and human tumor-derived cell lines. The 58 kDa form is activated specifically during the S and G2/M phases of the cell cycle. The longer form undergoes phosphorylation on Ser residues mainly, and the shorter form on both Ser and Thr residues.
Molecular Weight:	52925
Gene ID:	1326
NCBI Accession:	<a href="#">NP_001231063</a> , <a href="#">NP_005195</a>
UniProt:	<a href="#">P41279</a>
Pathways:	<a href="#">PI3K-Akt Signaling</a> , <a href="#">TCR Signaling</a>

## Application Details

Application Notes:	WB: 1:1000. IHC-P: 1:50~100. IHC-P: 1:50~100
Restrictions:	For Research Use only

## Handling

Format:	Liquid
Buffer:	Purified polyclonal antibody supplied in PBS with 0.09 % (W/V) sodium azide.
Preservative:	Sodium azide
Precaution of Use:	This product contains Sodium azide: a POISONOUS AND HAZARDOUS SUBSTANCE which should be handled by trained staff only.
Storage:	4 °C, -20 °C
Storage Comment:	Maintain refrigerated at 2-8 °C for up to 6 months. For long term storage store at -20 °C in small aliquots to prevent freeze-thaw cycles.
Expiry Date:	6 months



**Immunohistochemistry (Paraffin-embedded Sections)**

**Image 1.** Formalin-fixed and paraffin-embedded human breast carcinoma tissue reacted with COT Antibody (C-term) (ABIN392472 and ABIN2842056) , which was peroxidase-conjugated to the secondary antibody, followed by DAB staining. This data demonstrates the use of this antibody for immunohistochemistry, clinical relevance has not been evaluated.

**Western Blotting**

**Image 2.** The anti-COT Pab (ABIN392472 and ABIN2842056) is used in Western blot to detect COT in HeLa cell lysate.

**Immunohistochemistry (Paraffin-embedded Sections)**

**Image 3.** Formalin-fixed and paraffin-embedded human cancer tissue reacted with the primary antibody, which was peroxidase-conjugated to the secondary antibody, followed by DAB staining. This data demonstrates the use of this antibody for immunohistochemistry, clinical relevance has not been evaluated. BC = breast carcinoma, HC = hepatocarcinoma.