



Datasheet for ABIN392485
anti-MEK2 antibody (AA 262-292)



[Go to Product page](#)

5 Images

Overview

Quantity:	400 µL
Target:	MEK2 (MAP2K2)
Binding Specificity:	AA 262-292
Reactivity:	Human, Mouse
Host:	Rabbit
Clonality:	Polyclonal
Conjugate:	This MEK2 antibody is un-conjugated
Application:	Western Blotting (WB), Immunofluorescence (IF), Immunohistochemistry (Paraffin-embedded Sections) (IHC (p))

Product Details

Immunogen:	This MEK2 (MAP2K2) antibody is generated from rabbits immunized with a KLH conjugated synthetic peptide between 262-292 amino acids from the Central region of human MEK2 (MAP2K2).
Clone:	RB3597
Isotype:	Ig Fraction
Purification:	This antibody is purified through a protein G column, eluted with high and low pH buffers and neutralized immediately, followed by dialysis against PBS.

Target Details

Target:	MEK2 (MAP2K2)
---------	---------------

Target Details

Alternative Name: MEK2 (MAP2K2) ([MAP2K2 Products](#))

Background: MAP2K2 is a dual specificity protein kinase that belongs to the MAP kinase kinase family. This kinase is known to play a critical role in mitogen growth factor signal transduction. It phosphorylates and thus activates MAPK1/ERK2 and MAPK2/ERK3. The activation of this kinase itself is dependent on the Ser/Thr phosphorylation by MAP kinase kinase kinases. The inhibition or degradation of this kinase is found to be involved in the pathogenesis of Yersinia and anthrax.

Molecular Weight: 44424

Gene ID: 5605

NCBI Accession: [NP_109587](#)

UniProt: [P36507](#)

Pathways: [MAPK Signaling](#), [RTK Signaling](#), [Fc-epsilon Receptor Signaling Pathway](#), [Neurotrophin Signaling Pathway](#), [Activation of Innate immune Response](#), [Toll-Like Receptors Cascades](#), [Signaling of Hepatocyte Growth Factor Receptor](#), [BCR Signaling](#)

Application Details

Application Notes: IF: 1:10~50. WB: 1:1000. WB: 1:1000. WB: 1:1000. IHC-P: 1:50~100

Restrictions: For Research Use only

Handling

Format: Liquid

Buffer: Purified polyclonal antibody supplied in PBS with 0.09 % (W/V) sodium azide.

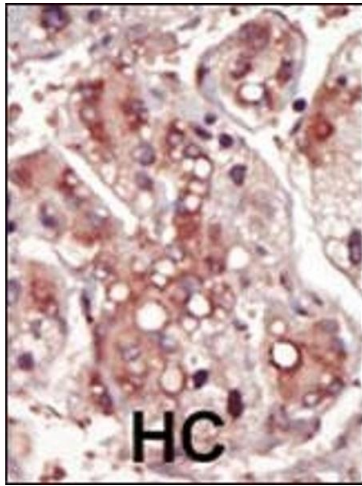
Preservative: Sodium azide

Precaution of Use: This product contains Sodium azide: a POISONOUS AND HAZARDOUS SUBSTANCE which should be handled by trained staff only.

Storage: 4 °C,-20 °C

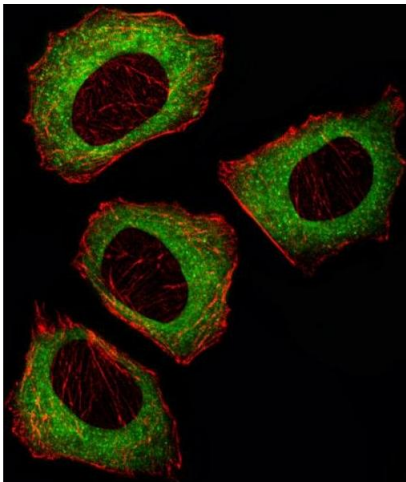
Storage Comment: Maintain refrigerated at 2-8 °C for up to 6 months. For long term storage store at -20 °C in small aliquots to prevent freeze-thaw cycles.

Expiry Date: 6 months



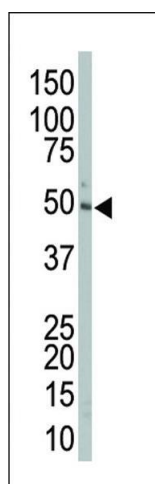
Immunohistochemistry (Paraffin-embedded Sections)

Image 1. Formalin-fixed and paraffin-embedded human cancer tissue reacted with the primary antibody, which was peroxidase-conjugated to the secondary antibody, followed by DAB staining. This data demonstrates the use of this antibody for immunohistochemistry, clinical relevance has not been evaluated. BC = breast carcinoma, HC = hepatocarcinoma.



Immunofluorescence

Image 2. Fluorescent image of cell stained with MEK2 (P2K2) Antibody (Center) (ABIN392485 and ABIN2842062)/SA110819AW. cells were fixed with 4 % PFA (20 min), permeabilized with Triton X-100 (0.1 %, 10 min), then incubated with MEK2 primary antibody (1:25, 1 h at 37 °C). For secondary antibody, Alexa Fluor® 488 conjugated donkey anti-rabbit antibody (green) was used (1:400, 50 min at 37 °C). Cytoplasmic actin was counterstained with Alexa Fluor® 555 (red) conjugated Phalloidin (7 units/mL, 1 h at 37 °C). MEK2 immunoreactivity is localized to Cytoplasm significantly.



Western Blotting

Image 3. The anti-P2K2 Pab (ABIN392485 and ABIN2842062) is used in Western blot to detect P2K2 in mouse liver tissue lysate.

Please check the [product details page](#) for more images. Overall 5 images are available for ABIN392485.