

Datasheet for ABIN392497
anti-STK39 antibody (AA 346-376)[Go to Product page](#)

7 Images

4 Publications

Overview

Quantity:	400 µL
Target:	STK39
Binding Specificity:	AA 346-376
Reactivity:	Human, Mouse
Host:	Rabbit
Clonality:	Polyclonal
Conjugate:	This STK39 antibody is un-conjugated
Application:	Western Blotting (WB), Immunohistochemistry (Paraffin-embedded Sections) (IHC (p))

Product Details

Immunogen:	This SPAK antibody is generated from rabbits immunized with a KLH conjugated synthetic peptide between 346-376 amino acids from the Central region of human SPAK.
Clone:	RB03418
Isotype:	Ig Fraction
Predicted Reactivity:	Rat
Purification:	This antibody is prepared by Saturated Ammonium Sulfate (SAS) precipitation followed by dialysis against PBS.

Target Details

Target:	STK39
---------	-------

Target Details

Alternative Name:	SPAK (STK39 Products)
Background:	<p>SPAK is a serine/threonine kinase containing an N-terminal series of proline and alanine repeats (PAPA box), followed by a serine/threonine kinase catalytic domain, a nuclear localization signal, a consensus caspase cleavage recognition motif, and a C-terminal region. Northern blot analysis detects ubiquitous expression, most abundantly in brain and pancreas. SPAK can phosphorylate itself and an exogenous substrate in vitro. SPAK immunoprecipitates from transfected mammalian cells in a complex with another serine/threonine kinase that phosphorylates catalytically inactive SPAK. SPAK activates the p38 MAP kinase pathway in cotransfection assays. Full-length SPAK is expressed in the cytoplasm in transfected cells, while a mutant corresponding to caspase-cleaved STK39 localizes predominantly in the nucleus.</p>
Molecular Weight:	59474
Gene ID:	27347
NCBI Accession:	NP_037365
UniProt:	Q9UEW8

Application Details

Application Notes:	WB: 1:1000. WB: 1:1000. WB: 1:1000. WB: 1:1000. WB: 1:1000. WB: 1:1000. IHC-P: 1:50~100
Restrictions:	For Research Use only

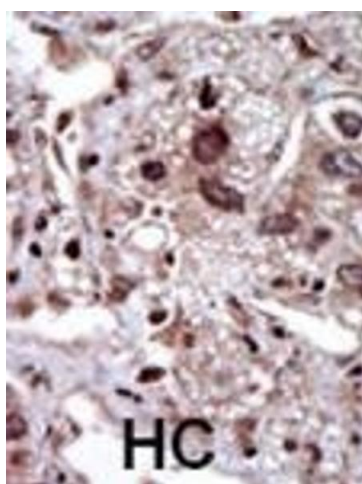
Handling

Format:	Liquid
Buffer:	Purified polyclonal antibody supplied in PBS with 0.09 % (W/V) sodium azide.
Preservative:	Sodium azide
Precaution of Use:	This product contains Sodium azide: a POISONOUS AND HAZARDOUS SUBSTANCE which should be handled by trained staff only.
Storage:	4 °C,-20 °C
Storage Comment:	Maintain refrigerated at 2-8 °C for up to 6 months. For long term storage store at -20 °C in small aliquots to prevent freeze-thaw cycles.
Expiry Date:	6 months

Publications

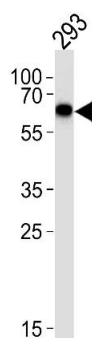
- Product cited in: Abdelalim, Masuda, Tooyama: "Expression of natriuretic peptide-activated guanylate cyclases by cholinergic and dopaminergic amacrine cells of the rat retina." in: **Peptides**, Vol. 29, Issue 4, pp. 622-8, (2008) ([PubMed](#)).
- Dams, Van Acker, Gustin, Vereycken, Bunkens, Holemans, Smeulders, Clayton, Ohagen, Hertogs: "A time-resolved fluorescence assay to identify small-molecule inhibitors of HIV-1 fusion." in: **Journal of biomolecular screening**, Vol. 12, Issue 6, pp. 865-74, (2007) ([PubMed](#)).
- Tomescot, Leschik, Bellamy, Dubois, Messas, Bruneval, Desnos, Hagège, Amit, Itskovitz, Menasché, Pucéat: "Differentiation in vivo of cardiac committed human embryonic stem cells in postmyocardial infarcted rats." in: **Stem cells (Dayton, Ohio)**, Vol. 25, Issue 9, pp. 2200-5, (2007) ([PubMed](#)).

Images



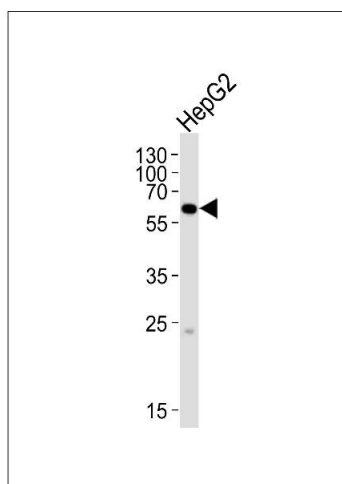
Immunohistochemistry (Paraffin-embedded Sections)

Image 1. Formalin-fixed and paraffin-embedded human cancer tissue reacted with the primary antibody, which was peroxidase-conjugated to the secondary antibody, followed by DAB staining. This data demonstrates the use of this antibody for immunohistochemistry, clinical relevance has not been evaluated. BC = breast carcinoma, HC = hepatocarcinoma.



Western Blotting

Image 2. Western blot analysis of lysate from 293 cell line, using SK Antibody (ABIN392497 and ABIN2842067). (ABIN392497 and ABIN2842067) was diluted at 1:1000 at each lane. A goat anti-rabbit IgG H&L(HRP) at 1:5000 dilution was used as the secondary antibody. Lysate at 35 µg.



Western Blotting

Image 3. Western blot analysis of lysate from HepG2 cell line, using SK Antibody (ABIN392497 and ABIN2842067). (ABIN392497 and ABIN2842067) was diluted at 1:1000. A goat anti-rabbit IgG H&L(HRP) at 1:10000 dilution was used as the secondary antibody. Lysate at 20 µg.

Please check the [product details page](#) for more images. Overall 7 images are available for ABIN392497.