

Datasheet for ABIN392518
anti-LHB antibody (C-Term)

2 Images

[Go to Product page](#)

Overview

Quantity:	400 µL
Target:	LHB
Binding Specificity:	AA 78-104, C-Term
Reactivity:	Human
Host:	Rabbit
Clonality:	Polyclonal
Conjugate:	This LHB antibody is un-conjugated
Application:	Western Blotting (WB), Immunohistochemistry (Paraffin-embedded Sections) (IHC (p))

Product Details

Immunogen:	This LHB antibody is generated from rabbits immunized with a KLH conjugated synthetic peptide between 78-104 amino acids from the C-terminal region of human LHB.
Clone:	RB14582
Isotype:	Ig Fraction
Purification:	This antibody is prepared by Saturated Ammonium Sulfate (SAS) precipitation followed by dialysis against PBS.

Target Details

Target:	LHB
Alternative Name:	LHB (LHB Products)

Target Details

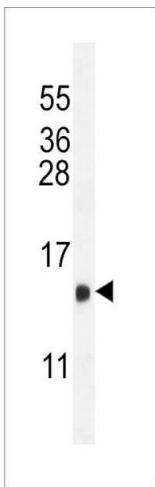
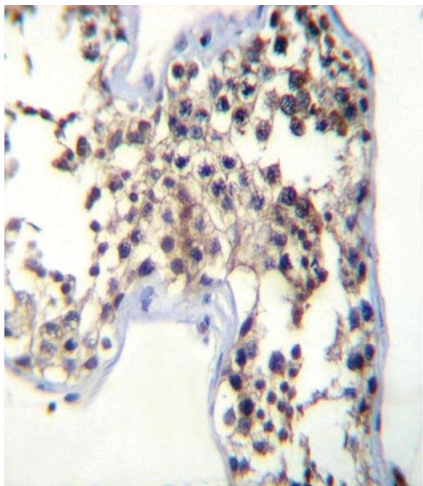
Background:	LHB is a member of the glycoprotein hormone beta chain family and is the beta subunit of luteinizing hormone (LH). Glycoprotein hormones are heterodimers consisting of a common alpha subunit and an unique beta subunit which confers biological specificity. LH is expressed in the pituitary gland and promotes spermatogenesis and ovulation by stimulating the testes and ovaries to synthesize steroids.
Molecular Weight:	15345
Gene ID:	3972
NCBI Accession:	NP_000885
UniProt:	P01229
Pathways:	Metabolism of Steroid Hormones and Vitamin D , Peptide Hormone Metabolism , Hormone Activity , C21-Steroid Hormone Metabolic Process

Application Details

Application Notes:	WB: 1:1000. IHC-P: 1:10~50
Restrictions:	For Research Use only

Handling

Format:	Liquid
Buffer:	Purified polyclonal antibody supplied in PBS with 0.09 % (W/V) sodium azide.
Preservative:	Sodium azide
Precaution of Use:	This product contains Sodium azide: a POISONOUS AND HAZARDOUS SUBSTANCE which should be handled by trained staff only.
Storage:	4 °C,-20 °C
Storage Comment:	Maintain refrigerated at 2-8 °C for up to 6 months. For long term storage store at -20 °C in small aliquots to prevent freeze-thaw cycles.
Expiry Date:	6 months



Immunohistochemistry (Paraffin-embedded Sections)

Image 1. LHB Antibody (C-term) (ABIN392518 and ABIN2842078) immunohistochemistry analysis in formalin fixed and paraffin embedded human testis tissue followed by peroxidase conjugation of the secondary antibody and DAB staining. This data demonstrates the use of LHB Antibody (C-term) for immunohistochemistry. Clinical relevance has not been evaluated.

Western Blotting

Image 2. LHB Antibody (C-term) (ABIN392518 and ABIN2842078) western blot analysis in mouse heart tissue lysates (35 µg/lane). This demonstrates the LHB antibody detected the LHB protein (arrow).