

Datasheet for ABIN392526
anti-CYP1A1 antibody (C-Term)

3 Images

1 Publication



[Go to Product page](#)

Overview

Quantity:	200 µL
Target:	CYP1A1
Binding Specificity:	AA 377-405, C-Term
Reactivity:	Human, Mouse
Host:	Rabbit
Clonality:	Polyclonal
Conjugate:	This CYP1A1 antibody is un-conjugated
Application:	Western Blotting (WB), Immunohistochemistry (Paraffin-embedded Sections) (IHC (p))

Product Details

Immunogen:	This CYP1A1 antibody is generated from rabbits immunized with a KLH conjugated synthetic peptide between 377-405 amino acids from the C-terminal region of human CYP1A1.
Clone:	RB16938
Isotype:	Ig Fraction
Predicted Reactivity:	Pr
Purification:	This antibody is prepared by Saturated Ammonium Sulfate (SAS) precipitation followed by dialysis against PBS.

Target Details

Target:	CYP1A1
---------	--------

Target Details

Alternative Name:	CYP1A1 (CYP1A1 Products)
Background:	CYP1A1 is a member of the cytochrome P450 superfamily of enzymes. The cytochrome P450 proteins are monooxygenases which catalyze many reactions involved in drug metabolism and synthesis of cholesterol, steroids and other lipids. This protein localizes to the endoplasmic reticulum and its expression is induced by some polycyclic aromatic hydrocarbons (PAHs), some of which are found in cigarette smoke. The enzyme's endogenous substrate is unknown, however, it is able to metabolize some PAHs to carcinogenic intermediates. CYP1A1 gene has been associated with lung cancer risk.
Molecular Weight:	58165
Gene ID:	1543
NCBI Accession:	NP_000490
UniProt:	P04798
Pathways:	Steroid Hormone Biosynthesis, Regulation of Lipid Metabolism by PPARalpha

Application Details

Application Notes:	WB: 1:1000. WB: 1:1000. IHC-P: 1:10~50
Restrictions:	For Research Use only

Handling

Format:	Liquid
Buffer:	Purified polyclonal antibody supplied in PBS with 0.09 % (W/V) sodium azide.
Preservative:	Sodium azide
Precaution of Use:	This product contains Sodium azide: a POISONOUS AND HAZARDOUS SUBSTANCE which should be handled by trained staff only.
Storage:	4 °C, -20 °C
Storage Comment:	Maintain refrigerated at 2-8 °C for up to 6 months. For long term storage store at -20 °C in small aliquots to prevent freeze-thaw cycles.
Expiry Date:	6 months

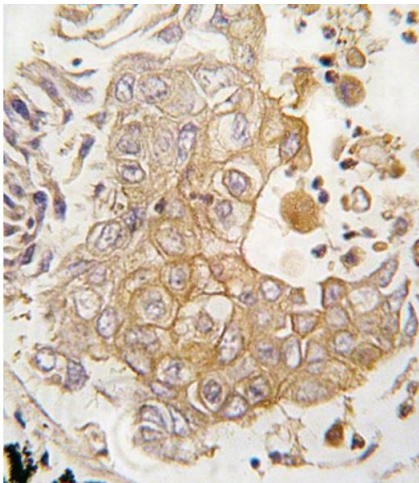
Publications

Product cited in: Abdelalim, Masuda, Tooyama: "Expression of natriuretic peptide-activated guanylate cyclases by cholinergic and dopaminergic amacrine cells of the rat retina." in: **Peptides**, Vol. 29, Issue 4, pp. 622-8, (2008) ([PubMed](#)).

Dams, Van Acker, Gustin, Vereycken, Bunkens, Holemans, Smeulders, Clayton, Ohagen, Hertogs: "A time-resolved fluorescence assay to identify small-molecule inhibitors of HIV-1 fusion." in: **Journal of biomolecular screening**, Vol. 12, Issue 6, pp. 865-74, (2007) ([PubMed](#)).

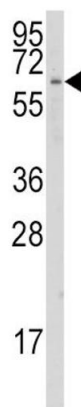
Tomescot, Leschik, Bellamy, Dubois, Messas, Bruneval, Desnos, Hagège, Amit, Itskovitz, Menasché, Pucéat: "Differentiation in vivo of cardiac committed human embryonic stem cells in postmyocardial infarcted rats." in: **Stem cells (Dayton, Ohio)**, Vol. 25, Issue 9, pp. 2200-5, (2007) ([PubMed](#)).

Images



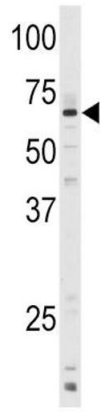
Immunohistochemistry (Paraffin-embedded Sections)

Image 1. Formalin-fixed and paraffin-embedded human lung carcinoma tissue reacted with CYP1A1 antibody (C-term), which was peroxidase-conjugated to the secondary antibody, followed by DAB staining. This data demonstrates the use of this antibody for immunohistochemistry, clinical relevance has not been evaluated.



Western Blotting

Image 2. Western blot analysis of anti-CYP1A1 Antibody (C-term) (ABIN392526 and ABIN2842081) in K562 cell line lysates (35 µg/lane). CYP1A1 (arrow) was detected using the purified Pab.



Western Blotting

Image 3. Western blot analysis of anti-CYP1A1 Antibody (C-term) (ABIN392526 and ABIN2842081) in mouse lung tissue lysates (35 µg/lane). CYP1A1 (arrow) was detected using the purified Pab.