



[Go to Product page](#)

Datasheet for ABIN392553

anti-LDLRAP1 antibody (N-Term)

2 Images

Overview

Quantity:	400 µL
Target:	LDLRAP1
Binding Specificity:	AA 11-42, N-Term
Reactivity:	Human
Host:	Rabbit
Clonality:	Polyclonal
Conjugate:	This LDLRAP1 antibody is un-conjugated
Application:	Western Blotting (WB), Immunohistochemistry (Paraffin-embedded Sections) (IHC (p))

Product Details

Immunogen:	This ARH (LDLRAP1) antibody is generated from rabbits immunized with a KLH conjugated synthetic peptide between 11-42 amino acids from the N-terminal region of human ARH (LDLRAP1).
Clone:	RB12630
Isotype:	Ig Fraction
Predicted Reactivity:	M, Rat
Purification:	This antibody is prepared by Saturated Ammonium Sulfate (SAS) precipitation followed by dialysis against PBS.

Target Details

Target:	LDLRAP1
---------	---------

Target Details

Alternative Name: ARH (LDLRAP1) ([LDLRAP1 Products](#))

Background: LDLRAP1 is a cytosolic protein which contains a phosphotyrosine binding (PTD) domain. The PTD domain has been found to interact with the cytoplasmic tail of the LDL receptor. This adapter protein is required for efficient endocytosis of the LDL receptor (LDLR) in polarized cells such as hepatocytes and lymphocytes, but not in non-polarized cells (fibroblasts). LDLRAP1 may be required for LDL binding and internalization but not for receptor clustering in coated pits. This protein may facilitate the endocytosis of LDLR and LDLR-LDL complexes from coated pits by stabilizing the interaction between the receptor and the structural components of the pits, and may also be involved in the internalization of other LDLR family members. Mutations in the LDLRAP1 gene lead to LDL receptor malfunction and cause the disorder autosomal recessive hypercholesterolaemia.

Molecular Weight: 33885

Gene ID: 26119

NCBI Accession: [NP_056442](#)

UniProt: [Q5SW96](#)

Pathways: [Lipid Metabolism](#)

Application Details

Application Notes: WB: 1:1000. IHC-P: 1:10~50

Restrictions: For Research Use only

Handling

Format: Liquid

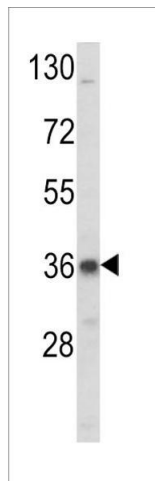
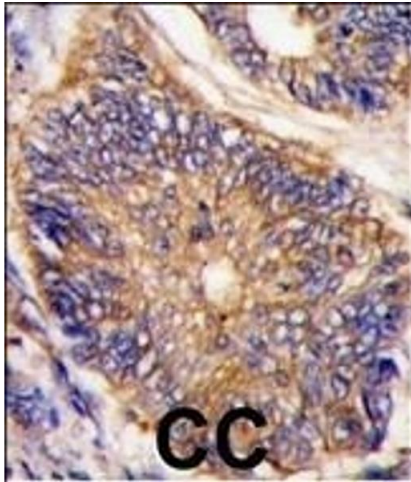
Buffer: Purified polyclonal antibody supplied in PBS with 0.09 % (W/V) sodium azide.

Preservative: Sodium azide

Precaution of Use: This product contains Sodium azide: a POISONOUS AND HAZARDOUS SUBSTANCE which should be handled by trained staff only.

Storage: 4 °C, -20 °C

Storage Comment: Maintain refrigerated at 2-8 °C for up to 6 months. For long term storage store at -20 °C in small aliquots to prevent freeze-thaw cycles.



Immunohistochemistry (Paraffin-embedded Sections)

Image 1. Formalin-fixed and paraffin-embedded human colon carcinoma tissue reacted with LDLR antibody (N-term) (ABIN392553 and ABIN2842100), which was peroxidase-conjugated to the secondary antibody, followed by DAB staining. This data demonstrates the use of this antibody for immunohistochemistry, clinical relevance has not been evaluated.

Western Blotting

Image 2. Western blot analysis of LDLR Antibody (N-term) (ABIN392553 and ABIN2842100) in K562 cell line lysates (35 µg/lane). LDLR (arrow) was detected using the purified Pab.