



[Go to Product page](#)

Datasheet for ABIN392554

## anti-LDLRAP1 antibody (C-Term)

### 2 Images

#### Overview

Quantity:	400 µL
Target:	LDLRAP1
Binding Specificity:	AA 277-306, C-Term
Reactivity:	Human
Host:	Rabbit
Clonality:	Polyclonal
Conjugate:	This LDLRAP1 antibody is un-conjugated
Application:	Western Blotting (WB), Immunohistochemistry (Paraffin-embedded Sections) (IHC (p))

#### Product Details

Immunogen:	This ARH (LDLRAP1) antibody is generated from rabbits immunized with a KLH conjugated synthetic peptide between 277-306 amino acids from the C-terminal region of human ARH (LDLRAP1).
Clone:	RB13027
Isotype:	Ig Fraction
Purification:	This antibody is prepared by Saturated Ammonium Sulfate (SAS) precipitation followed by dialysis against PBS.

#### Target Details

Target:	LDLRAP1
Alternative Name:	ARH (LDLRAP1) ( <a href="#">LDLRAP1 Products</a> )

## Target Details

---

**Background:** LDLRAP1 is a cytosolic protein which contains a phosphotyrosine binding (PTD) domain. The PTD domain has been found to interact with the cytoplasmic tail of the LDL receptor. This adapter protein is required for efficient endocytosis of the LDL receptor (LDLR) in polarized cells such as hepatocytes and lymphocytes, but not in non-polarized cells (fibroblasts). LDLRAP1 may be required for LDL binding and internalization but not for receptor clustering in coated pits. This protein may facilitate the endocytosis of LDLR and LDLR-LDL complexes from coated pits by stabilizing the interaction between the receptor and the structural components of the pits, and may also be involved in the internalization of other LDLR family members. Mutations in the LDLRAP1 gene lead to LDL receptor malfunction and cause the disorder autosomal recessive hypercholesterolaemia.

---

**Molecular Weight:** 33885

---

**Gene ID:** 26119

---

**NCBI Accession:** [NP\\_056442](#)

---

**UniProt:** [Q5SW96](#)

---

**Pathways:** [Lipid Metabolism](#)

## Application Details

---

**Application Notes:** WB: 1:1000. IHC-P: 1:10~50

---

**Restrictions:** For Research Use only

## Handling

---

**Format:** Liquid

---

**Buffer:** Purified polyclonal antibody supplied in PBS with 0.09 % (W/V) sodium azide.

---

**Preservative:** Sodium azide

---

**Precaution of Use:** This product contains Sodium azide: a POISONOUS AND HAZARDOUS SUBSTANCE which should be handled by trained staff only.

---

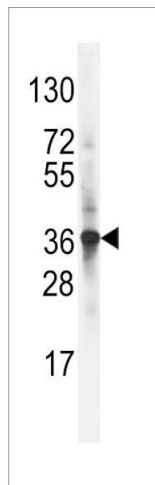
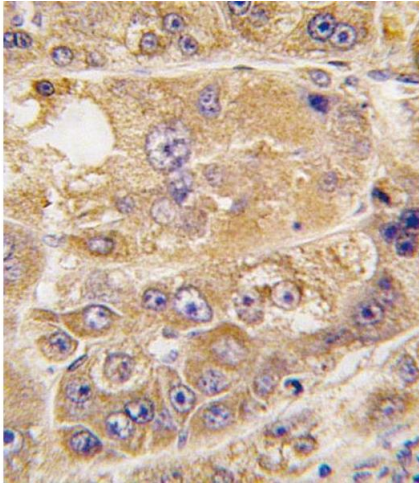
**Storage:** 4 °C,-20 °C

---

**Storage Comment:** Maintain refrigerated at 2-8 °C for up to 6 months. For long term storage store at -20 °C in small aliquots to prevent freeze-thaw cycles.

---

**Expiry Date:** 6 months



### Immunohistochemistry (Paraffin-embedded Sections)

**Image 1.** Formalin-fixed and paraffin-embedded human hepatocarcinoma tissue reacted with LDLR antibody (C-term) (ABIN392554 and ABIN2842101), which was peroxidase-conjugated to the secondary antibody, followed by DAB staining. This data demonstrates the use of this antibody for immunohistochemistry, clinical relevance has not been evaluated.

### Western Blotting

**Image 2.** Western blot analysis of LDLR Antibody (C-term) (ABIN392554 and ABIN2842101) in NCI- cell line lysates (35 µg/lane). LDLR (arrow) was detected using the purified Pab.