

Datasheet for ABIN392563
anti-PIK3CD antibody (C-Term)[Go to Product page](#)

4 Images

Overview

Quantity:	400 µL
Target:	PIK3CD
Binding Specificity:	AA 687-717, C-Term
Reactivity:	Human
Host:	Rabbit
Clonality:	Polyclonal
Application:	Western Blotting (WB), Immunohistochemistry (Paraffin-embedded Sections) (IHC (p)), Immunofluorescence (IF)

Product Details

Immunogen:	This PI3KCD antibody is generated from rabbits immunized with a KLH conjugated synthetic peptide between 687-717 amino acids from the C-terminal region of human PI3KCD.
Clone:	RB1707
Isotype:	Ig Fraction
Purification:	This antibody is purified through a protein A column, followed by peptide affinity purification.

Target Details

Target:	PIK3CD
Alternative Name:	PI3KCD (PIK3CD Products)
Background:	Protein kinases are enzymes that transfer a phosphate group from a phosphate donor, generally the γ phosphate of ATP, onto an acceptor amino acid in a substrate protein. By this

Target Details

basic mechanism, protein kinases mediate most of the signal transduction in eukaryotic cells, regulating cellular metabolism, transcription, cell cycle progression, cytoskeletal rearrangement and cell movement, apoptosis, and differentiation. With more than 500 gene products, the protein kinase family is one of the largest families of proteins in eukaryotes. The family has been classified in 8 major groups based on sequence comparison of their tyrosine (PTK) or serine/threonine (STK) kinase catalytic domains.

Molecular Weight: 119479

Gene ID: 5293

NCBI Accession: [NP_005017](#)

UniProt: [O00329](#)

Pathways: [BCR Signaling](#), [Warburg Effect](#)

Application Details

Application Notes: IF: 1:10~50. WB: 1:1000. WB: 1:2000. IHC-P-Leica: 1:500

Restrictions: For Research Use only

Handling

Format: Liquid

Buffer: Purified polyclonal antibody supplied in PBS with 0.09 % (W/V) sodium azide.

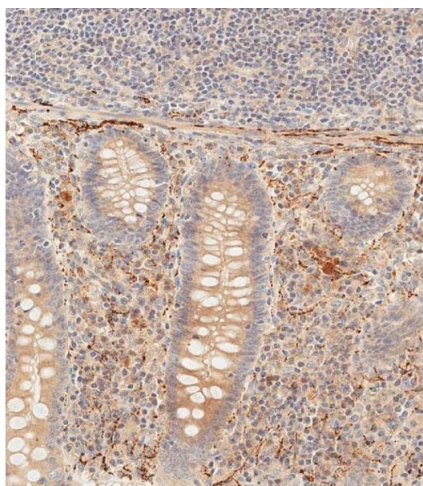
Preservative: Sodium azide

Precaution of Use: This product contains Sodium azide: a POISONOUS AND HAZARDOUS SUBSTANCE which should be handled by trained staff only.

Storage: 4 °C, -20 °C

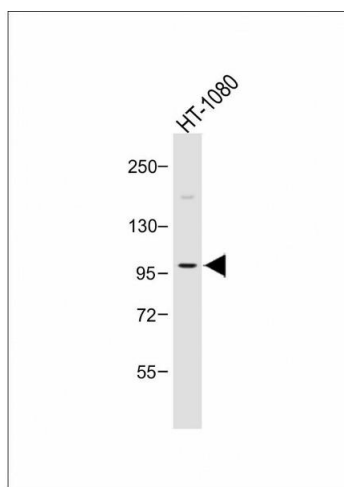
Storage Comment: Maintain refrigerated at 2-8 °C for up to 6 months. For long term storage store at -20 °C in small aliquots to prevent freeze-thaw cycles.

Expiry Date: 6 months



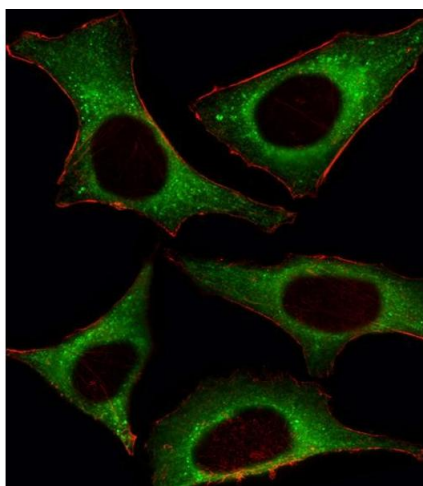
Immunohistochemistry (Paraffin-embedded Sections)

Image 1. Immunohistochemical analysis of paraffin-embedded human epityphlon tissue using (ABIN392563 and ABIN2842106) performed on the Leica® BOND RXm. Samples were incubated with primary Antibody (1/500) for 1 hours at room temperature. A undiluted biotinylated CRF Anti-Polyvalent HRP Polymer antibody was used as the secondary antibody.



Western Blotting

Image 2. Anti-PI3KCD Antibody (C-term) at 1:1000 dilution + HT-1080 whole cell lysate Lysates/proteins at 20 µg per lane. Secondary Goat Anti-Rabbit IgG, (H+L), Peroxidase conjugated at 1/10000 dilution. Predicted band size : 119 kDa Blocking/Dilution buffer: 5 % NFDm/TBST.



Immunofluorescence

Image 3. Fluorescent image of HeLa cell stained with PI3KCD Antibody (C-term) (ABIN392563 and ABIN2842106). HeLa cells were fixed with 4 % PFA (20 min), permeabilized with Triton X-100 (0.1 %, 10 min), then incubated with PI3KCD primary antibody (1:25, 1 h at 37 °C). For secondary antibody, Alexa Fluor® 488 conjugated donkey anti-rabbit antibody (green) was used (1:400, 50 min at 37 °C). Cytoplasmic actin was counterstained with Alexa Fluor® 555 (red) conjugated Phalloidin (7 units/mL, 1 h at 37 °C). PI3KCD immunoreactivity is localized to Cytoplasm significantly.

Please check the [product details page](#) for more images. Overall 4 images are available for ABIN392563.