

Datasheet for ABIN392567

anti-PIK3 gamma antibody (C-Term)**2** Images[Go to Product page](#)

Overview

Quantity:	400 µL
Target:	PIK3 gamma (PIK3CG)
Binding Specificity:	AA 1074-1102, C-Term
Reactivity:	Human
Host:	Rabbit
Clonality:	Polyclonal
Conjugate:	This PIK3 gamma antibody is un-conjugated
Application:	Western Blotting (WB), Immunohistochemistry (Paraffin-embedded Sections) (IHC (p))

Product Details

Immunogen:	This PI3KCG antibody is generated from rabbits immunized with a KLH conjugated synthetic peptide between 1074-1102 amino acids from the C-terminal region of human PI3KCG.
Clone:	RB1711-1712
Isotype:	Ig Fraction
Predicted Reactivity:	M, Pig
Purification:	This antibody is prepared by Saturated Ammonium Sulfate (SAS) precipitation followed by dialysis against PBS.

Target Details

Target:	PIK3 gamma (PIK3CG)
---------	---------------------

Target Details

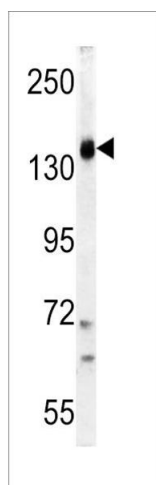
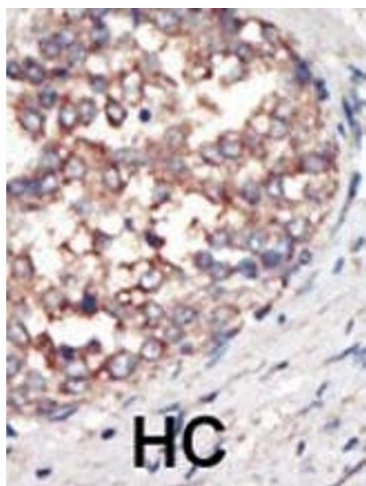
Alternative Name:	PI3KCG (PIK3CG Products)
Background:	PI3KCG belongs to the pi3/pi4-kinase family of proteins. This protein is an enzyme that phosphorylates phosphoinositides on the 3-hydroxyl group of the inositol ring. It is an important modulator of extracellular signals, including those elicited by E-cadherin-mediated cell-cell adhesion, which plays an important role in maintenance of the structural and functional integrity of epithelia. In addition to its role in promoting assembly of adherens junctions, the protein is thought to play a pivotal role in the regulation of cytotoxicity in NK cells.
Molecular Weight:	126454
Gene ID:	5294
NCBI Accession:	NP_001269355 , NP_001269356 , NP_002640
UniProt:	P48736
Pathways:	PI3K-Akt Signaling , RTK Signaling , AMPK Signaling , TLR Signaling , Inositol Metabolic Process , Hepatitis C , VEGF Signaling

Application Details

Application Notes:	WB: 1:1000. IHC-P: 1:50~100
Restrictions:	For Research Use only

Handling

Format:	Liquid
Buffer:	Purified polyclonal antibody supplied in PBS with 0.09 % (W/V) sodium azide.
Preservative:	Sodium azide
Precaution of Use:	This product contains Sodium azide: a POISONOUS AND HAZARDOUS SUBSTANCE which should be handled by trained staff only.
Storage:	4 °C, -20 °C
Storage Comment:	Maintain refrigerated at 2-8 °C for up to 6 months. For long term storage store at -20 °C in small aliquots to prevent freeze-thaw cycles.
Expiry Date:	6 months



Immunohistochemistry (Paraffin-embedded Sections)

Image 1. Formalin-fixed and paraffin-embedded human cancer tissue reacted with the primary antibody, which was peroxidase-conjugated to the secondary antibody, followed by AEC staining. This data demonstrates the use of this antibody for immunohistochemistry, clinical relevance has not been evaluated. BC = breast carcinoma, HC = hepatocarcinoma.

Western Blotting

Image 2. Western blot analysis of PI3KCG Antibody (C-term) (ABIN392567 and ABIN2842108) in K562 cell line lysates (35 µg/lane). PI3KCG (arrow) was detected using the purified Pab.