



[Go to Product page](#)

Datasheet for ABIN392595

## anti-PIP5K1C antibody (N-Term)

2 Images

1 Publication

### Overview

Quantity:	400 µL
Target:	PIP5K1C
Binding Specificity:	AA 26-57, N-Term
Reactivity:	Human
Host:	Rabbit
Clonality:	Polyclonal
Conjugate:	This PIP5K1C antibody is un-conjugated
Application:	Western Blotting (WB), Immunohistochemistry (Paraffin-embedded Sections) (IHC (p))

### Product Details

Immunogen:	This PIP5KI gamma (PIP5K1G) antibody is generated from rabbits immunized with a KLH conjugated synthetic peptide between 26-57 amino acids from the N-terminal region of human PIP5KI gamma (PIP5K1G).
Clone:	RB01732
Isotype:	Ig Fraction
Purification:	This antibody is prepared by Saturated Ammonium Sulfate (SAS) precipitation followed by dialysis against PBS.

### Target Details

Target:	PIP5K1C
Alternative Name:	PIP5KI gamma (PIP5K1G) ( <a href="#">PIP5K1C Products</a> )

## Target Details

---

Background:	Protein kinases are enzymes that transfer a phosphate group from a phosphate donor, generally the $\gamma$ phosphate of ATP, onto an acceptor amino acid in a substrate protein. By this basic mechanism, protein kinases mediate most of the signal transduction in eukaryotic cells, regulating cellular metabolism, transcription, cell cycle progression, cytoskeletal rearrangement and cell movement, apoptosis, and differentiation. With more than 500 gene products, the protein kinase family is one of the largest families of proteins in eukaryotes. The family has been classified in 8 major groups based on sequence comparison of their tyrosine (PTK) or serine/threonine (STK) kinase catalytic domains.
Molecular Weight:	73260
Gene ID:	23396
NCBI Accession:	<a href="#">NP_001182662</a> , <a href="#">NP_036530</a>
UniProt:	<a href="#">O60331</a>
Pathways:	<a href="#">PI3K-Akt Signaling</a> , <a href="#">Inositol Metabolic Process</a> , <a href="#">Cell-Cell Junction Organization</a> , <a href="#">Maintenance of Protein Location</a> , <a href="#">Synaptic Vesicle Exocytosis</a>

## Application Details

---

Application Notes:	WB: 1:1000. IHC-P: 1:50~100
Restrictions:	For Research Use only

## Handling

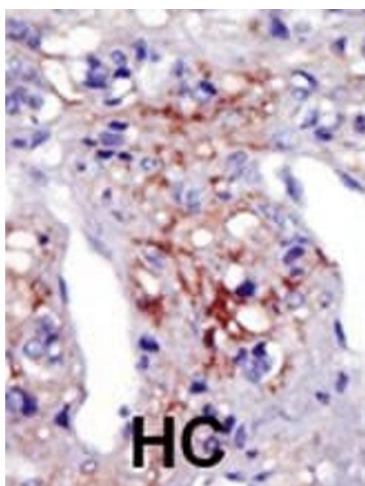
---

Format:	Liquid
Buffer:	Purified polyclonal antibody supplied in PBS with 0.09 % (W/V) sodium azide.
Preservative:	Sodium azide
Precaution of Use:	This product contains Sodium azide: a POISONOUS AND HAZARDOUS SUBSTANCE which should be handled by trained staff only.
Storage:	4 °C, -20 °C
Storage Comment:	Maintain refrigerated at 2-8 °C for up to 6 months. For long term storage store at -20 °C in small aliquots to prevent freeze-thaw cycles.
Expiry Date:	6 months

## Publications

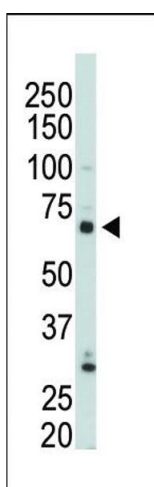
Product cited in: Bolomini-Vittori, Montresor, Giagulli, Staunton, Rossi, Martinello, Constantin, Laudanna: "Regulation of conformer-specific activation of the integrin LFA-1 by a chemokine-triggered Rho signaling module." in: **Nature immunology**, Vol. 10, Issue 2, pp. 185-94, (2009) ([PubMed](#)).

## Images



### Immunohistochemistry (Paraffin-embedded Sections)

**Image 1.** Formalin-fixed and paraffin-embedded human cancer tissue reacted with the primary antibody, which was peroxidase-conjugated to the secondary antibody, followed by AEC staining. This data demonstrates the use of this antibody for immunohistochemistry, clinical relevance has not been evaluated. BC = breast carcinoma, HC = hepatocarcinoma.



### Western Blotting

**Image 2.** The anti-PIP5K1G Pab (ABIN392595 and ABIN2842124) is used in Western blot to detect PIP5K1G in 293 cell lysate.