

Datasheet for ABIN392609
anti-BRD2 antibody (AA 170-200)

3 Images

[Go to Product page](#)

Overview

Quantity:	400 µL
Target:	BRD2
Binding Specificity:	AA 170-200
Reactivity:	Human
Host:	Rabbit
Clonality:	Polyclonal
Conjugate:	This BRD2 antibody is un-conjugated
Application:	Western Blotting (WB), Immunohistochemistry (Paraffin-embedded Sections) (IHC (p))

Product Details

Immunogen:	This BRD2 antibody is generated from rabbits immunized with a KLH conjugated synthetic peptide between 170-200 amino acids from the Central region of human BRD2.
Clone:	RB3416
Isotype:	Ig Fraction
Predicted Reactivity:	M, Rat
Purification:	This antibody is prepared by Saturated Ammonium Sulfate (SAS) precipitation followed by dialysis against PBS.

Target Details

Target:	BRD2
---------	------

Target Details

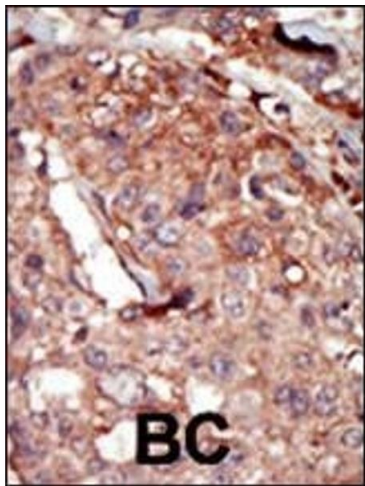
Alternative Name:	BRD2 (BRD2 Products)
Background:	BRD2 is a mitogen-activated kinase which localizes to the nucleus. The gene maps to the major histocompatibility complex (MHC) class II region on chromosome 6p21.3 but sequence comparison suggests that the protein is not involved in the immune response. Homology to the Drosophila gene female sterile homeotic suggests that this human protein may be part of a signal transduction pathway involved in growth control.
Molecular Weight:	88061
Gene ID:	6046
NCBI Accession:	NP_001106653 , NP_001186384 , NP_001186385 , NP_005095
UniProt:	P25440
Pathways:	Chromatin Binding , SARS-CoV-2 Protein Interactome , The Global Phosphorylation Landscape of SARS-CoV-2 Infection

Application Details

Application Notes:	WB: 1:1000. WB: 1:1000. IHC-P: 1:50~100
Restrictions:	For Research Use only

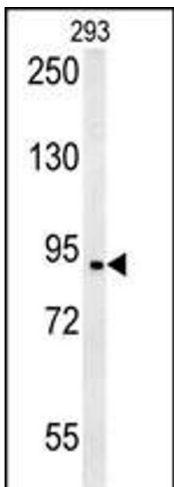
Handling

Format:	Liquid
Buffer:	Purified polyclonal antibody supplied in PBS with 0.09 % (W/V) sodium azide.
Preservative:	Sodium azide
Precaution of Use:	This product contains Sodium azide: a POISONOUS AND HAZARDOUS SUBSTANCE which should be handled by trained staff only.
Storage:	4 °C, -20 °C
Storage Comment:	Maintain refrigerated at 2-8 °C for up to 6 months. For long term storage store at -20 °C in small aliquots to prevent freeze-thaw cycles.
Expiry Date:	6 months



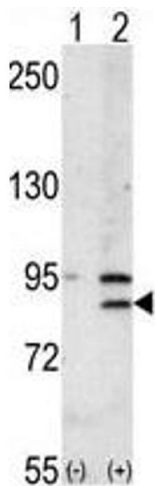
Immunohistochemistry (Paraffin-embedded Sections)

Image 1. Formalin-fixed and paraffin-embedded human cancer tissue reacted with the primary antibody, which was peroxidase-conjugated to the secondary antibody, followed by AEC staining. This data demonstrates the use of this antibody for immunohistochemistry, clinical relevance has not been evaluated. BC = breast carcinoma, HC = hepatocarcinoma.



Western Blotting

Image 2. BRD2- (ABIN392609 and ABIN2842131) western blot analysis in 293 cell line lysates (35 µg/lane). This demonstrates the BRD2 antibody detected the BRD2 protein (arrow).



Western Blotting

Image 3. Western blot analysis of BRD2 (arrow) using rabbit polyclonal BRD2 Antibody (Center) (ABIN392609 and ABIN2842131). 293 cell lysates (2 µg/lane) either nontransfected (Lane 1) or transiently transfected with the BRD2 gene (Lane 2) (Origene Technologies).