

Datasheet for ABIN392639

**anti-NUAK1 antibody (N-Term)****2** Images**1** Publication[Go to Product page](#)

## Overview

Quantity:	400 µL
Target:	NUAK1
Binding Specificity:	AA 1-30, N-Term
Reactivity:	Human, Mouse, Hamster
Host:	Rabbit
Clonality:	Polyclonal
Conjugate:	This NUAK1 antibody is un-conjugated
Application:	Western Blotting (WB), Immunohistochemistry (Paraffin-embedded Sections) (IHC (p))

## Product Details

Immunogen:	This ARK5 antibody is generated from rabbits immunized with a KLH conjugated synthetic peptide between 1-30 amino acids from the N-terminal region of human ARK5.
Clone:	RB3520
Isotype:	Ig Fraction
Purification:	This antibody is prepared by Saturated Ammonium Sulfate (SAS) precipitation followed by dialysis against PBS.

## Target Details

Target:	NUAK1
Alternative Name:	ARK5 ( <a href="#">NUAK1 Products</a> )

## Target Details

**Background:** Protein kinases are enzymes that transfer a phosphate group from a phosphate donor, generally the  $\gamma$  phosphate of ATP, onto an acceptor amino acid in a substrate protein. By this basic mechanism, protein kinases mediate most of the signal transduction in eukaryotic cells, regulating cellular metabolism, transcription, cell cycle progression, cytoskeletal rearrangement and cell movement, apoptosis, and differentiation. With more than 500 gene products, the protein kinase family is one of the largest families of proteins in eukaryotes. The family has been classified in 8 major groups based on sequence comparison of their tyrosine (PTK) or serine/threonine (STK) kinase catalytic domains. The STE group (homologs of yeast Sterile 7, 11, 20 kinases) consists of 50 kinases related to the mitogen-activated protein kinase (MAPK) cascade families (Ste7/MAP2K, Ste11/MAP3K, and Ste20/MAP4K). MAP kinase cascades, consisting of a MAPK and one or more upstream regulatory kinases (MAPKKs) have been best characterized in the yeast pheromone response pathway. Pheromones bind to Ste cell surface receptors and activate yeast MAPK pathway.

**Molecular Weight:** 74305

**Gene ID:** 9891

**NCBI Accession:** [NP\\_055655](#)

**UniProt:** [O60285](#)

## Application Details

**Application Notes:** WB: 1:1000. IHC-P: 1:50~100

**Restrictions:** For Research Use only

## Handling

**Format:** Liquid

**Buffer:** Purified polyclonal antibody supplied in PBS with 0.09 % (W/V) sodium azide.

**Preservative:** Sodium azide

**Precaution of Use:** This product contains Sodium azide: a POISONOUS AND HAZARDOUS SUBSTANCE which should be handled by trained staff only.

**Storage:** 4 °C, -20 °C

**Storage Comment:** Maintain refrigerated at 2-8 °C for up to 6 months. For long term storage store at -20 °C in small aliquots to prevent freeze-thaw cycles.

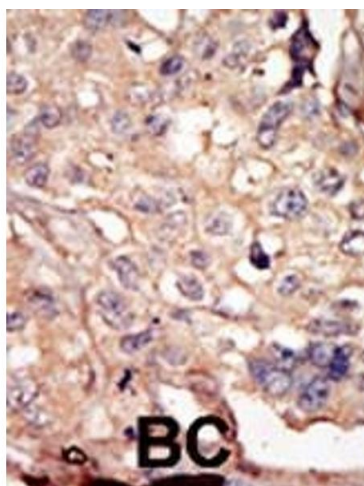
## Handling

Expiry Date: 6 months

## Publications

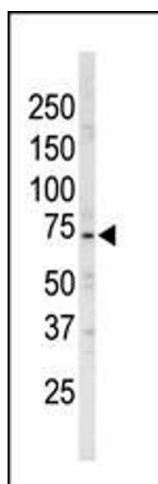
- Product cited in: Abdelalim, Masuda, Tooyama: "Expression of natriuretic peptide-activated guanylate cyclases by cholinergic and dopaminergic amacrine cells of the rat retina." in: **Peptides**, Vol. 29, Issue 4, pp. 622-8, (2008) ([PubMed](#)).
- Dams, Van Acker, Gustin, Vereycken, Bunkens, Holemans, Smeulders, Clayton, Ohagen, Hertogs: "A time-resolved fluorescence assay to identify small-molecule inhibitors of HIV-1 fusion." in: **Journal of biomolecular screening**, Vol. 12, Issue 6, pp. 865-74, (2007) ([PubMed](#)).
- Tomescot, Leschik, Bellamy, Dubois, Messas, Bruneval, Desnos, Hagège, Amit, Itskovitz, Menasché, Pucéat: "Differentiation in vivo of cardiac committed human embryonic stem cells in postmyocardial infarcted rats." in: **Stem cells (Dayton, Ohio)**, Vol. 25, Issue 9, pp. 2200-5, (2007) ([PubMed](#)).

## Images



### Immunohistochemistry (Paraffin-embedded Sections)

**Image 1.** Formalin-fixed and paraffin-embedded human cancer tissue reacted with the primary antibody, which was peroxidase-conjugated to the secondary antibody, followed by AEC staining. This data demonstrates the use of this antibody for immunohistochemistry, clinical relevance has not been evaluated. BC = breast carcinoma, HC = hepatocarcinoma.



### Western Blotting

**Image 2.** The anti-ARK5 Pab (ABIN392639 and ABIN2842143) is used in Western blot to detect ARK5 in mouse brain tissue lysate.