

Datasheet for ABIN392646
anti-NEK11 antibody (C-Term)[Go to Product page](#)

1 Image

Overview

Quantity:	400 µL
Target:	NEK11
Binding Specificity:	AA 480-510, C-Term
Reactivity:	Human
Host:	Rabbit
Clonality:	Polyclonal
Conjugate:	This NEK11 antibody is un-conjugated
Application:	Western Blotting (WB)

Product Details

Immunogen:	This NEK11L antibody is generated from rabbits immunized with a KLH conjugated synthetic peptide between 480-510 amino acids from the C-terminal region of human NEK11L.
Clone:	RB2994
Isotype:	Ig Fraction
Purification:	This antibody is purified through a protein A column, followed by peptide affinity purification.

Target Details

Target:	NEK11
Alternative Name:	NEK11L (NEK11 Products)
Background:	NEK11 belongs to the NIMA family of kinases, which are involved in DNA replication and

Target Details

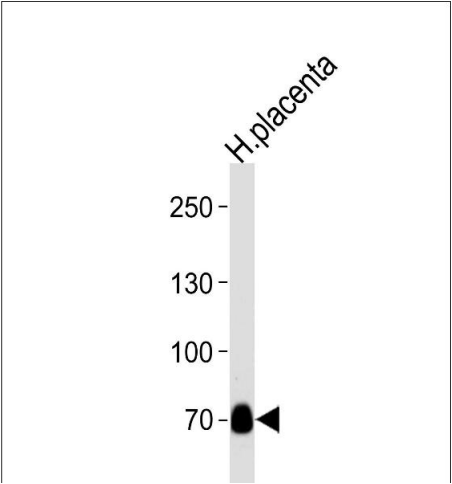
	genotoxic stress responses (Noguchi et al., 2002 [PubMed 12154088]).[supplied by OMIM]
Molecular Weight:	74192
Gene ID:	79858
NCBI Accession:	NP_001139475 , NP_079076 , NP_665917
UniProt:	Q8NG66

Application Details

Application Notes:	WB: 1:1000
Restrictions:	For Research Use only

Handling

Format:	Liquid
Buffer:	Purified polyclonal antibody supplied in PBS with 0.09 % (W/V) sodium azide.
Preservative:	Sodium azide
Precaution of Use:	This product contains Sodium azide: a POISONOUS AND HAZARDOUS SUBSTANCE which should be handled by trained staff only.
Storage:	4 °C,-20 °C
Storage Comment:	Maintain refrigerated at 2-8 °C for up to 6 months. For long term storage store at -20 °C in small aliquots to prevent freeze-thaw cycles.
Expiry Date:	6 months



Western Blotting

Image 1. Western blot analysis of lysate from human placenta tissue lysate, using NEK11L Antibody (ABIN392646 and ABIN2842148). (ABIN392646 and ABIN2842148) was diluted at 1:1000 at each lane. A goat anti-rabbit IgG H&L(HRP) at 1:5000 dilution was used as the secondary antibody. Lysate at 35 µg per lane.