

Datasheet for ABIN392649  
**anti-NEK2 antibody (AA 350-382)**[Go to Product page](#)

## 1 Image

## Overview

Quantity:	400 µL
Target:	NEK2
Binding Specificity:	AA 350-382
Reactivity:	Human
Host:	Rabbit
Clonality:	Polyclonal
Conjugate:	This NEK2 antibody is un-conjugated
Application:	Western Blotting (WB)

## Product Details

Immunogen:	This NEK2 antibody is generated from rabbits immunized with a KLH conjugated synthetic peptide between 350-382 amino acids from the Central region of human NEK2.
Clone:	RB2995
Isotype:	Ig Fraction
Purification:	This antibody is prepared by Saturated Ammonium Sulfate (SAS) precipitation followed by dialysis against PBS.

## Target Details

Target:	NEK2
Alternative Name:	NEK2 ( <a href="#">NEK2 Products</a> )

## Target Details

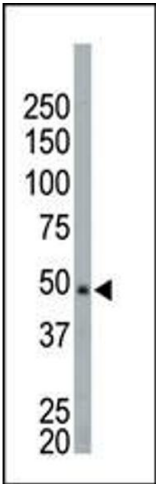
Background:	NEK2 is closely related in its catalytic domain to the serine/threonine protein kinase NIMA of <i>Aspergillus nidulans</i> which is required for entry into mitosis and may function in parallel to the universal mitotic inducer p34cdc2. Like NIMA, the Nek2 protein is almost undetectable during G1 but accumulates progressively throughout S, reaching maximal levels in late G2. These observations demonstrate that NEK2 resembles <i>Aspergillus</i> NIMA, both in its catalytic domain, and cell cycle-dependent expression. Recombinant NEK2 is active as a serine/threonine-specific protein kinase and may undergo autophosphorylation. Both human NEK2 and fungal NIMA phosphorylate a similar, but not identical, set of proteins and synthetic peptides. NEK2 is shown to be expressed most abundantly in adult testis and there is increasing evidence that NEK2 is abnormally expressed in a wide variety of human cancers. This antibody is specific to isoform 2 of NEK2.
Molecular Weight:	51763
Gene ID:	4751
NCBI Accession:	<a href="#">NP_001191111</a> , <a href="#">NP_001191112</a> , <a href="#">NP_002488</a>
UniProt:	<a href="#">P51955</a>
Pathways:	<a href="#">M Phase</a>

## Application Details

Application Notes:	WB: 1:1000
Restrictions:	For Research Use only

## Handling

Format:	Liquid
Buffer:	Purified polyclonal antibody supplied in PBS with 0.09 % (W/V) sodium azide.
Preservative:	Sodium azide
Precaution of Use:	This product contains Sodium azide: a POISONOUS AND HAZARDOUS SUBSTANCE which should be handled by trained staff only.
Storage:	4 °C, -20 °C
Storage Comment:	Maintain refrigerated at 2-8 °C for up to 6 months. For long term storage store at -20 °C in small aliquots to prevent freeze-thaw cycles.
Expiry Date:	6 months



Western Blotting

**Image 1.** The anti-NEK2 Pab (ABIN392649 and ABIN2837992) is used in Western blot to detect NEK2 in HeLa cell lysate.