

Datasheet for ABIN392655
anti-NME1 antibody (N-Term)

3 Images

[Go to Product page](#)

Overview

Quantity:	400 µL
Target:	NME1
Binding Specificity:	AA 25-54, N-Term
Reactivity:	Human
Host:	Rabbit
Clonality:	Polyclonal
Application:	Western Blotting (WB), Immunohistochemistry (Paraffin-embedded Sections) (IHC (p)), Immunofluorescence (IF)

Product Details

Immunogen:	This NM23 (NME1) antibody is generated from rabbits immunized with a KLH conjugated synthetic peptide between 25-54 amino acids from the N-terminal region of human NM23 (NME1).
Clone:	RB03726
Isotype:	Ig Fraction
Purification:	This antibody is purified through a protein A column, followed by peptide affinity purification.

Target Details

Target:	NME1
Alternative Name:	NM23 (NME1) (NME1 Products)
Background:	NME1 was identified because of its reduced mRNA transcript levels in highly metastatic cells.

Target Details

NME1 encodes the 'A' isoform of nucleoside diphosphate kinase (NDK). NDK exists as a hexamer composed of the 'A' (NME1) and 'B' (encoded by NME2) isoforms. Mutations in NME1 have been identified in aggressive neuroblastomas.

Molecular Weight: 17149

Gene ID: 4830

NCBI Accession: [NP_000260](#), [NP_937818](#)

UniProt: [P15531](#)

Pathways: [Apoptosis](#), [Nucleotide Phosphorylation](#), [Carbohydrate Homeostasis](#), [Ribonucleoside Biosynthetic Process](#)

Application Details

Application Notes: IF: 1:10~50. WB: 1:1000. IHC-P: 1:50~100

Restrictions: For Research Use only

Handling

Format: Liquid

Buffer: Purified polyclonal antibody supplied in PBS with 0.09 % (W/V) sodium azide.

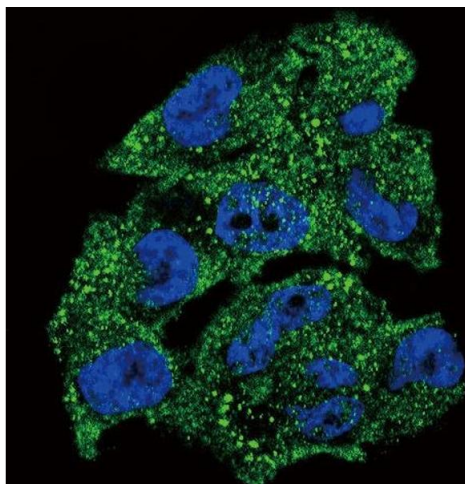
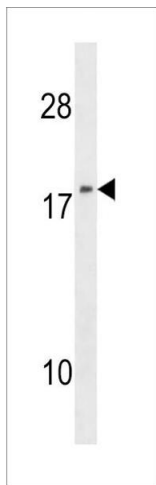
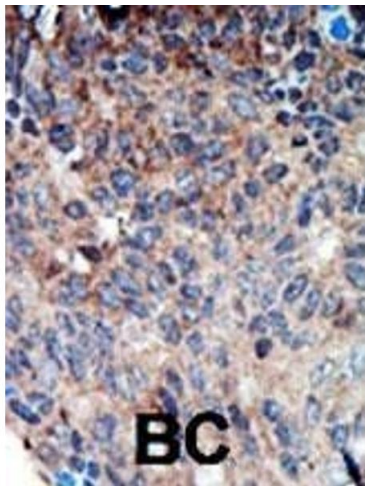
Preservative: Sodium azide

Precaution of Use: This product contains Sodium azide: a POISONOUS AND HAZARDOUS SUBSTANCE which should be handled by trained staff only.

Storage: 4 °C,-20 °C

Storage Comment: Maintain refrigerated at 2-8 °C for up to 6 months. For long term storage store at -20 °C in small aliquots to prevent freeze-thaw cycles.

Expiry Date: 6 months



Immunohistochemistry (Paraffin-embedded Sections)

Image 1. Formalin-fixed and paraffin-embedded human cancer tissue reacted with the primary antibody, which was peroxidase-conjugated to the secondary antibody, followed by DAB staining. This data demonstrates the use of this antibody for immunohistochemistry, clinical relevance has not been evaluated. BC = breast carcinoma, HC = hepatocarcinoma.

Western Blotting

Image 2. NME1 Antibody (F40) (ABIN392655 and ABIN2842156) western blot analysis in 293 cell line lysates (35 µg/lane). This demonstrates the NME1 antibody detected the NME1 protein (arrow).

Immunofluorescence

Image 3. Confocal immunofluorescent analysis of NM23 (NME1) Antibody (N-term) (ABIN392655 and ABIN2842156) with cell followed by Alexa Fluor 488-conjugated goat anti-rabbit IgG (green). DAPI was used to stain the cell nuclear (blue).