

Datasheet for ABIN392656
anti-NME2 antibody (N-Term)

3 Images



[Go to Product page](#)

Overview

Quantity:	400 µL
Target:	NME2
Binding Specificity:	AA 25-54, N-Term
Reactivity:	Human, Mouse, Rat
Host:	Rabbit
Clonality:	Polyclonal
Conjugate:	This NME2 antibody is un-conjugated
Application:	Western Blotting (WB), Immunohistochemistry (Paraffin-embedded Sections) (IHC (p)), Immunofluorescence (IF)

Product Details

Immunogen:	This NME2 antibody is generated from rabbits immunized with a KLH conjugated synthetic peptide between 25-54 amino acids from the N-terminal region of human NME2.
Clone:	RB3695
Isotype:	Ig Fraction
Purification:	This antibody is purified through a protein A column, followed by peptide affinity purification.

Target Details

Target:	NME2
Alternative Name:	NME2 (NME2 Products)

Target Details

Background: NM2 is a heterodimeric protein functioning as a nucleoside diphosphate (NDP) kinase. NME1 and NME2 comprise the 152 amino acid A and B polypeptide chains of the NM23 enzyme, respectively. NME2 is identical to the beta subunit of human erythrocyte NDP kinase. NDP kinases are involved in the synthesis of nucleoside triphosphates, and NM23 may act in the regulation of signal transduction by complexing with G proteins, causing activation/inactivation of developmental pathways. NEM2 has been identified as a putative tumor suppressor. High expression of mouse NME2 is detected in heart, liver, and kidney, with moderate expression in skeletal muscle, and negligible expression in other mouse tissues examined.

Molecular Weight: 17298

Gene ID: 654364

NCBI Accession: [NP_001018146](#), [NP_001018147](#), [NP_001018148](#), [NP_001018149](#), [NP_002503](#)

UniProt: [P22392](#)

Application Details

Application Notes: IF: 1:10~50. WB: 1:1000. IHC-P: 1:50~100

Restrictions: For Research Use only

Handling

Format: Liquid

Buffer: Purified polyclonal antibody supplied in PBS with 0.09 % (W/V) sodium azide.

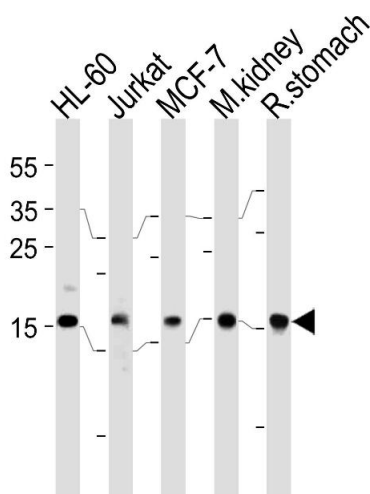
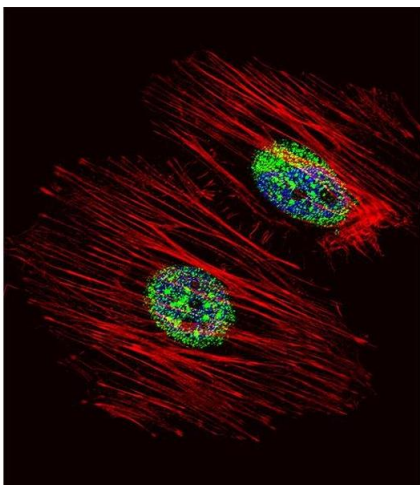
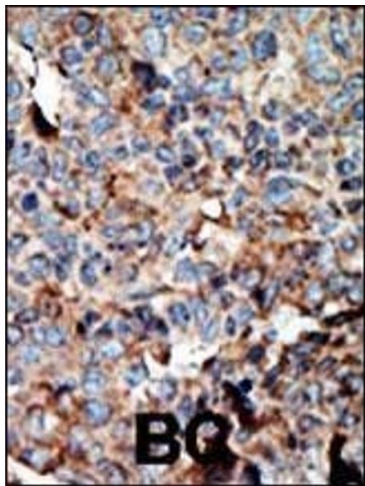
Preservative: Sodium azide

Precaution of Use: This product contains Sodium azide: a POISONOUS AND HAZARDOUS SUBSTANCE which should be handled by trained staff only.

Storage: 4 °C,-20 °C

Storage Comment: Maintain refrigerated at 2-8 °C for up to 6 months. For long term storage store at -20 °C in small aliquots to prevent freeze-thaw cycles.

Expiry Date: 6 months



Immunohistochemistry (Paraffin-embedded Sections)

Image 1. Formalin-fixed and paraffin-embedded human cancer tissue reacted with the primary antibody, which was peroxidase-conjugated to the secondary antibody, followed by AEC staining. This data demonstrates the use of this antibody for immunohistochemistry, clinical relevance has not been evaluated. BC = breast carcinoma, HC = hepatocarcinoma.

Immunofluorescence

Image 2. Fluorescent confocal image of HeLa cell stained with NME2 Antibody (N-term) (ABIN392656 and ABIN2842157). HeLa cells were fixed with 4 % PFA (20 min), permeabilized with Triton X-100 (0.1 %, 10 min), then incubated with NME2 primary antibody (1:25, 1 h at 37 °C). For secondary antibody, Alexa Fluor® 488 conjugated donkey anti-rabbit antibody (green) was used (1:400, 50 min at 37 °C). Cytoplasmic actin was counterstained with Alexa Fluor® 555 (red) conjugated Phalloidin (7 units/mL, 1 h at 37 °C). Nuclei were counterstained with DAPI (blue) (10 µg/mL, 10 min). NME2 immunoreactivity is localized to Cytoplasm and Nucleus significantly.

Western Blotting

Image 3. NME2 Antibody (F40) (ABIN392656 and ABIN2842157) western blot analysis in HL-60, Jurkat, MCF-7 cell line, mouse kidney and rat stomach tissue lysates (35 µg/lane). This demonstrates the NME2 antibody detected the NME2 protein (arrow).