

Datasheet for ABIN392658
anti-NME6 antibody (N-Term)[Go to Product page](#)

1 Image

Overview

Quantity:	400 µL
Target:	NME6
Binding Specificity:	AA 80-110, N-Term
Reactivity:	Human
Host:	Rabbit
Clonality:	Polyclonal
Conjugate:	This NME6 antibody is un-conjugated
Application:	Western Blotting (WB)

Product Details

Immunogen:	This NME6 antibody is generated from rabbits immunized with a KLH conjugated synthetic peptide between 80-110 amino acids from the N-terminal region of human NME6.
Clone:	RB3627
Isotype:	Ig Fraction
Purification:	This antibody is prepared by Saturated Ammonium Sulfate (SAS) precipitation followed by dialysis against PBS.

Target Details

Target:	NME6
Alternative Name:	NME6 (NME6 Products)

Target Details

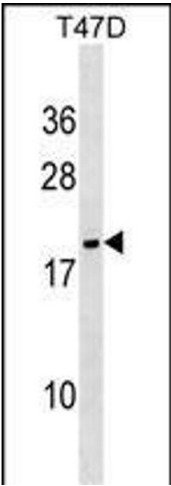
Background:	NME6 plays a major role in the synthesis of nucleoside triphosphates other than ATP. It is an inhibitor of p53-induced apoptosis. NME6 is expressed at a moderately low level in many tissues, most abundantly in kidney, prostate, ovary, intestine, and spleen.
Molecular Weight:	21142
Gene ID:	10201
NCBI Accession:	NP_005784
UniProt:	O75414
Pathways:	Nucleotide Phosphorylation , Ribonucleoside Biosynthetic Process

Application Details

Application Notes:	WB: 1:1000
Restrictions:	For Research Use only

Handling

Format:	Liquid
Buffer:	Purified polyclonal antibody supplied in PBS with 0.09 % (W/V) sodium azide.
Preservative:	Sodium azide
Precaution of Use:	This product contains Sodium azide: a POISONOUS AND HAZARDOUS SUBSTANCE which should be handled by trained staff only.
Storage:	4 °C,-20 °C
Storage Comment:	Maintain refrigerated at 2-8 °C for up to 6 months. For long term storage store at -20 °C in small aliquots to prevent freeze-thaw cycles.
Expiry Date:	6 months



Western Blotting

Image 1. NME6 Antibody (N-term) (ABIN392658 and ABIN2842158) western blot analysis in T47D cell line lysates (35 µg/lane). This demonstrates the NME6 antibody detected the NME6 protein (arrow).